

## Appendix 1-2-b

# Protective legal designations for the buffer zone of the individual component parts



# 001 Odai Yamamoto Site

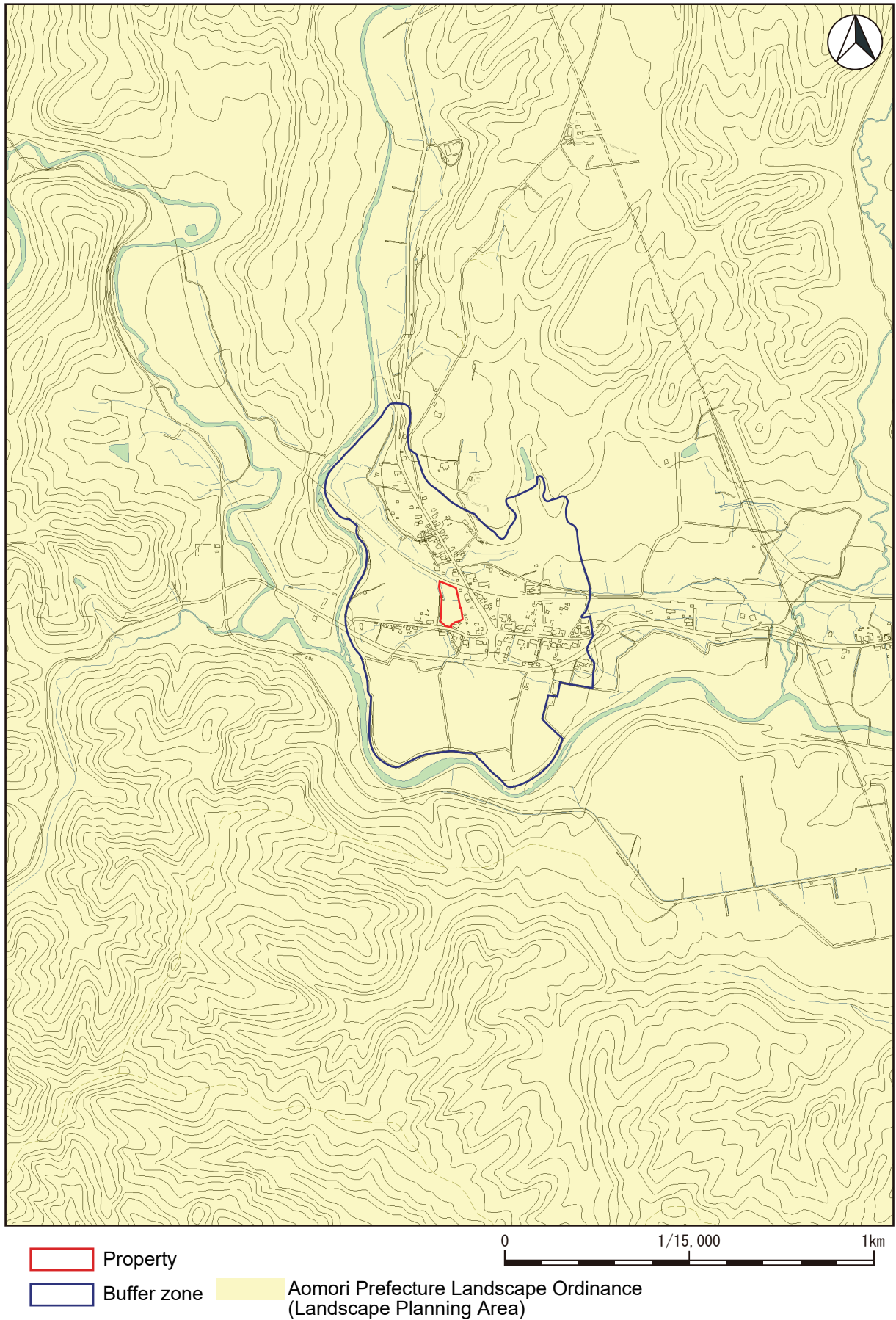
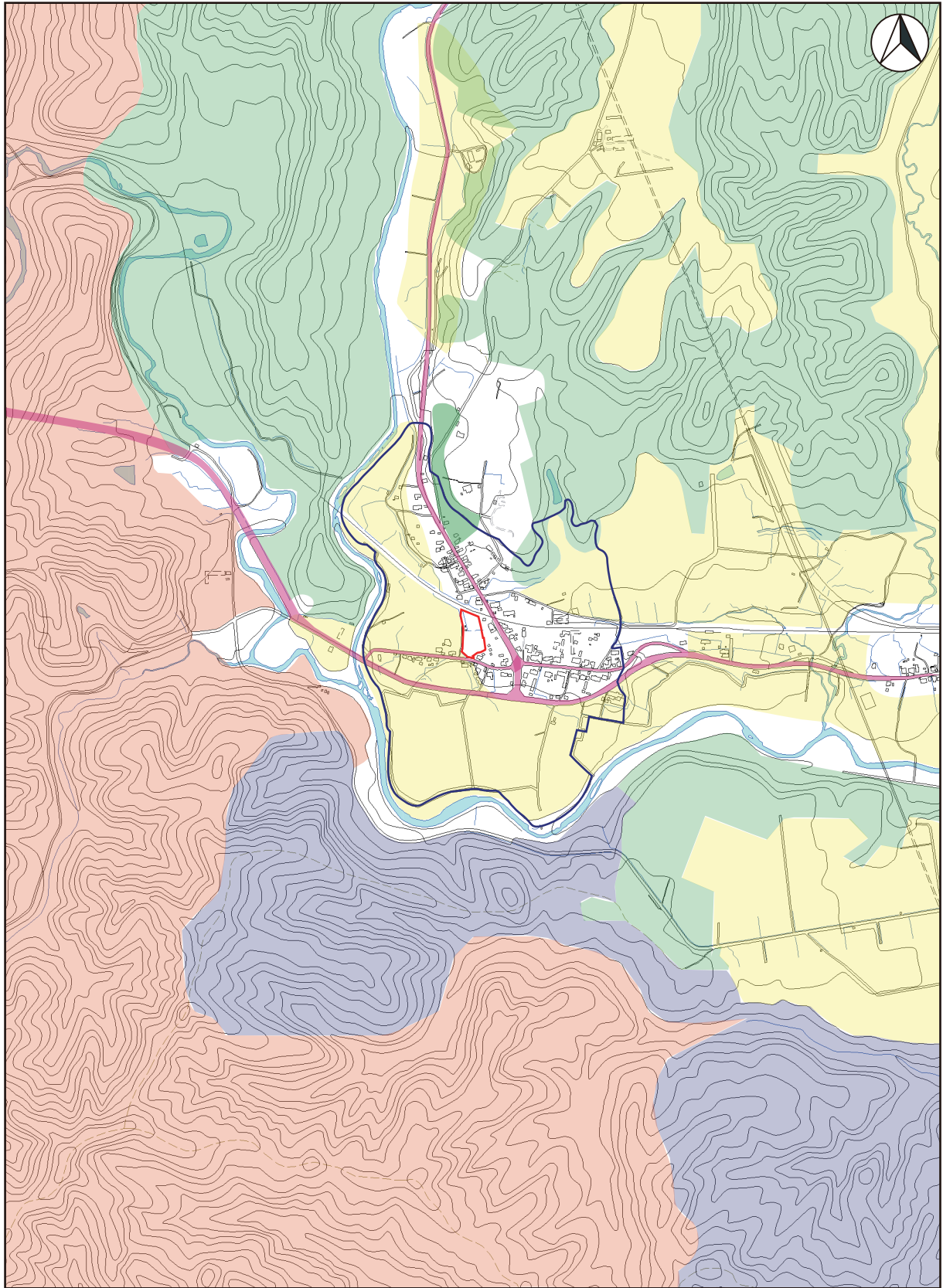


Figure 001-1 Map indicating the legal protection of the buffer zone around the component part (related to the Landscape Act)

001 Odai Yamamoto Site



0 1/15,000 1km








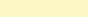
- |   |  |  |
|---|--|--|
|  Property    |  Road Act                     |  River Act  |
|  Buffer zone |  Forest Act (private forest)  |  Forest Act (national forest, prefectural forest)            |
|   |  Forest Act (reserved forest) |  Act Concerning Establishment of Agriculture Promotion Areas |

Figure 001-2 Map indicating the legal protection of the buffer zone around the component part (related to laws for land use control)

## 002 Kakinoshima Site

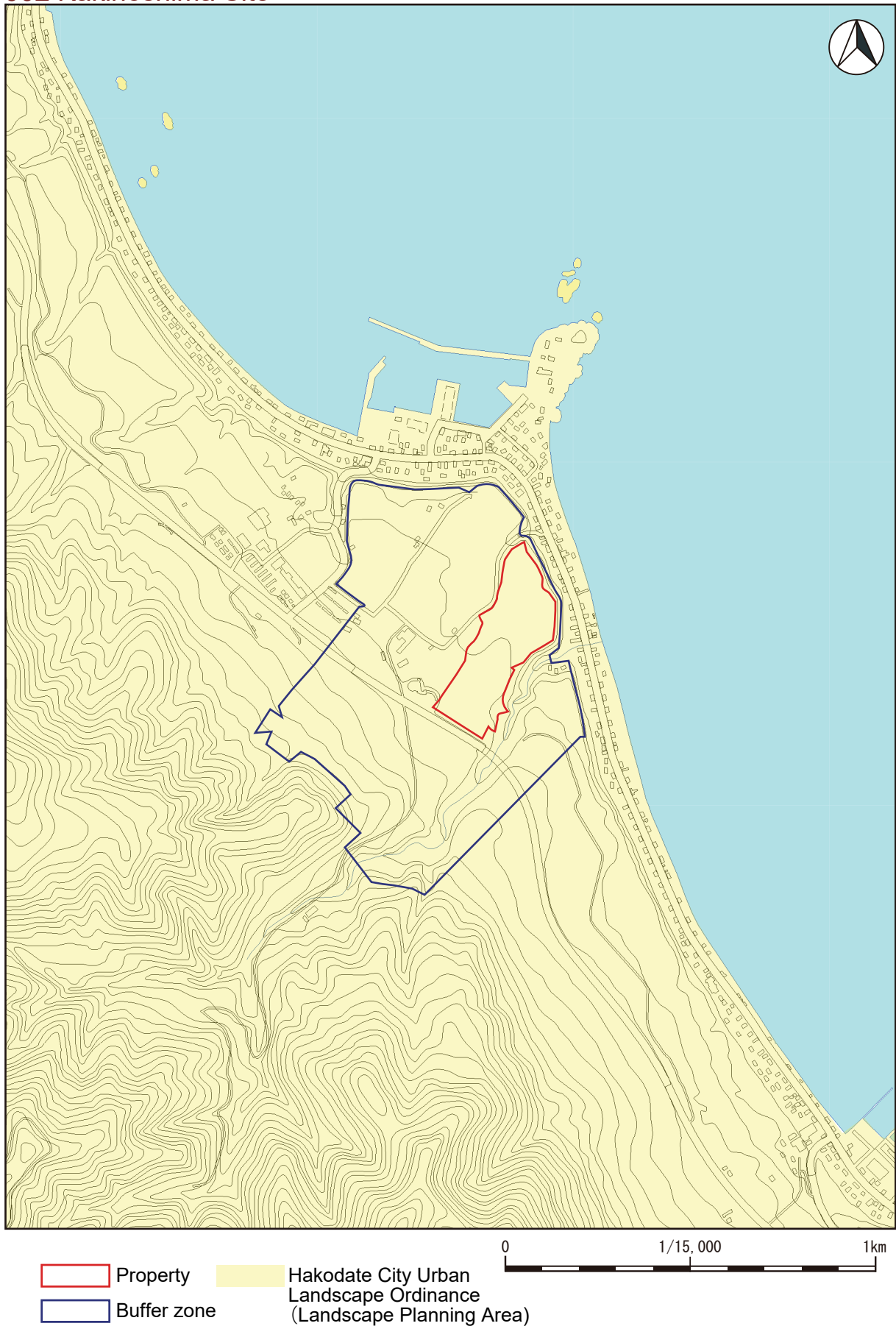
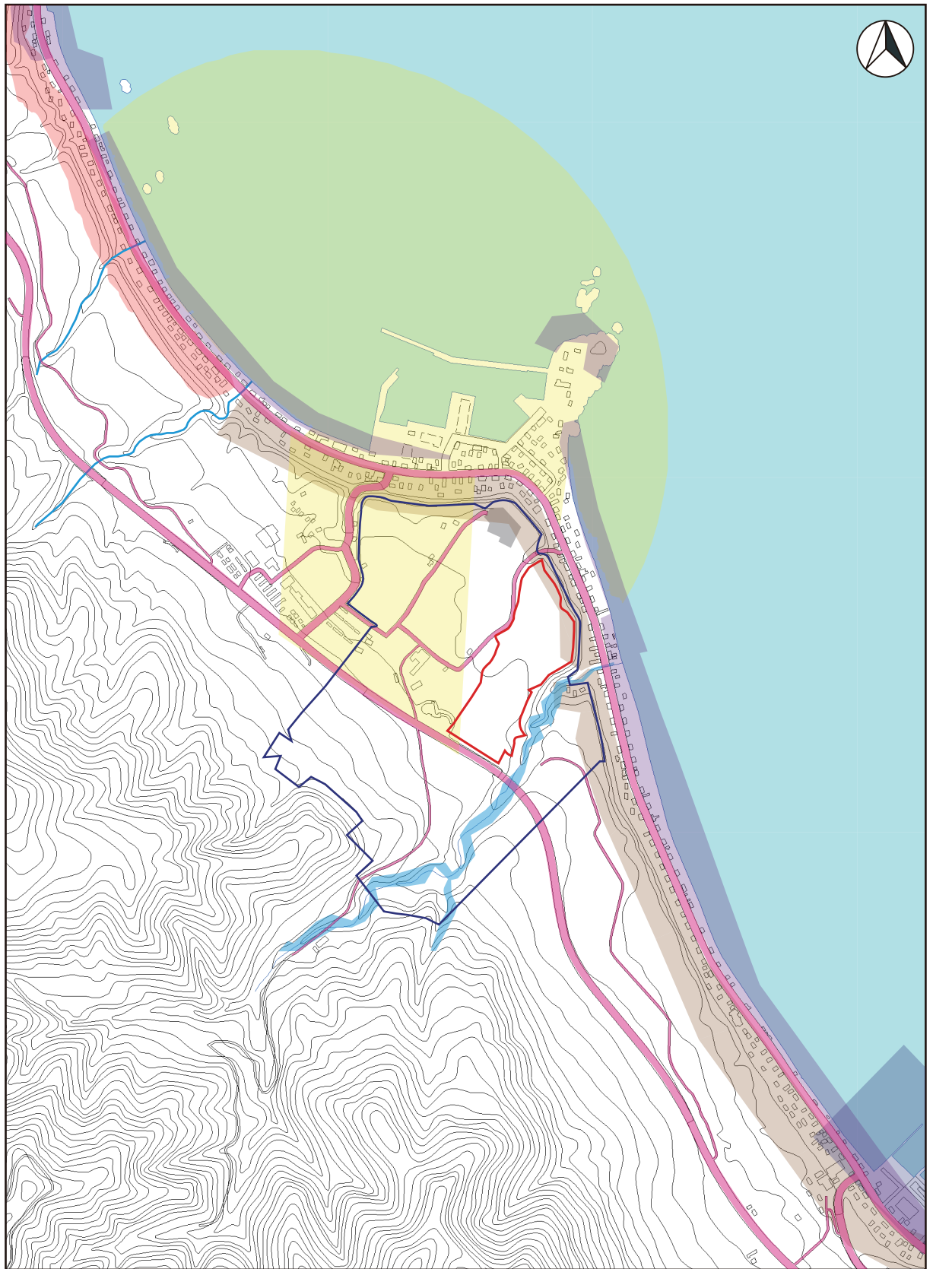


Figure 002-1 Map indicating the legal protection of the buffer zone around the component part (related to the Landscape Act)

# 002 Kakinoshima Site



0 1/15,000 1 km


- |   |  |  |   |
|---|--|--|---|
| <span style="border: 1px solid red; display: inline-block; width: 20px; height: 10px;"></span> Property     | <span style="border: 1px solid pink; display: inline-block; width: 20px; height: 10px;"></span> Road Act   | <span style="border: 1px solid lightblue; display: inline-block; width: 20px; height: 10px;"></span> River Act and Hakodate City Ordinary River Control Ordinance      | <span style="border: 1px solid yellow; display: inline-block; width: 20px; height: 10px;"></span> Fishing Ports and Fishing Grounds Act |
| <span style="border: 1px solid blue; display: inline-block; width: 20px; height: 10px;"></span> Buffer zone | <span style="border: 1px solid red; display: inline-block; width: 20px; height: 10px;"></span> Act Concerning the Sediment-related Disaster Prevention Measures in Sediment-related Disaster Prone Areas | <span style="border: 1px solid brown; display: inline-block; width: 20px; height: 10px;"></span> Act Concerning Prevention of Disasters due to Collapse of Steep Slope | <span style="border: 1px solid purple; display: inline-block; width: 20px; height: 10px;"></span> Coast Act                             |
|   |  |  | <span style="border: 1px solid grey; display: inline-block; width: 20px; height: 10px;"></span> Hakodate City Graveyard Ordinance       |

Figure 002-2 Map indicating the legal protection of the buffer zone around the component part (related to laws for land use control)


## 002 Kakinoshima Site



 Property

 Buffer zone

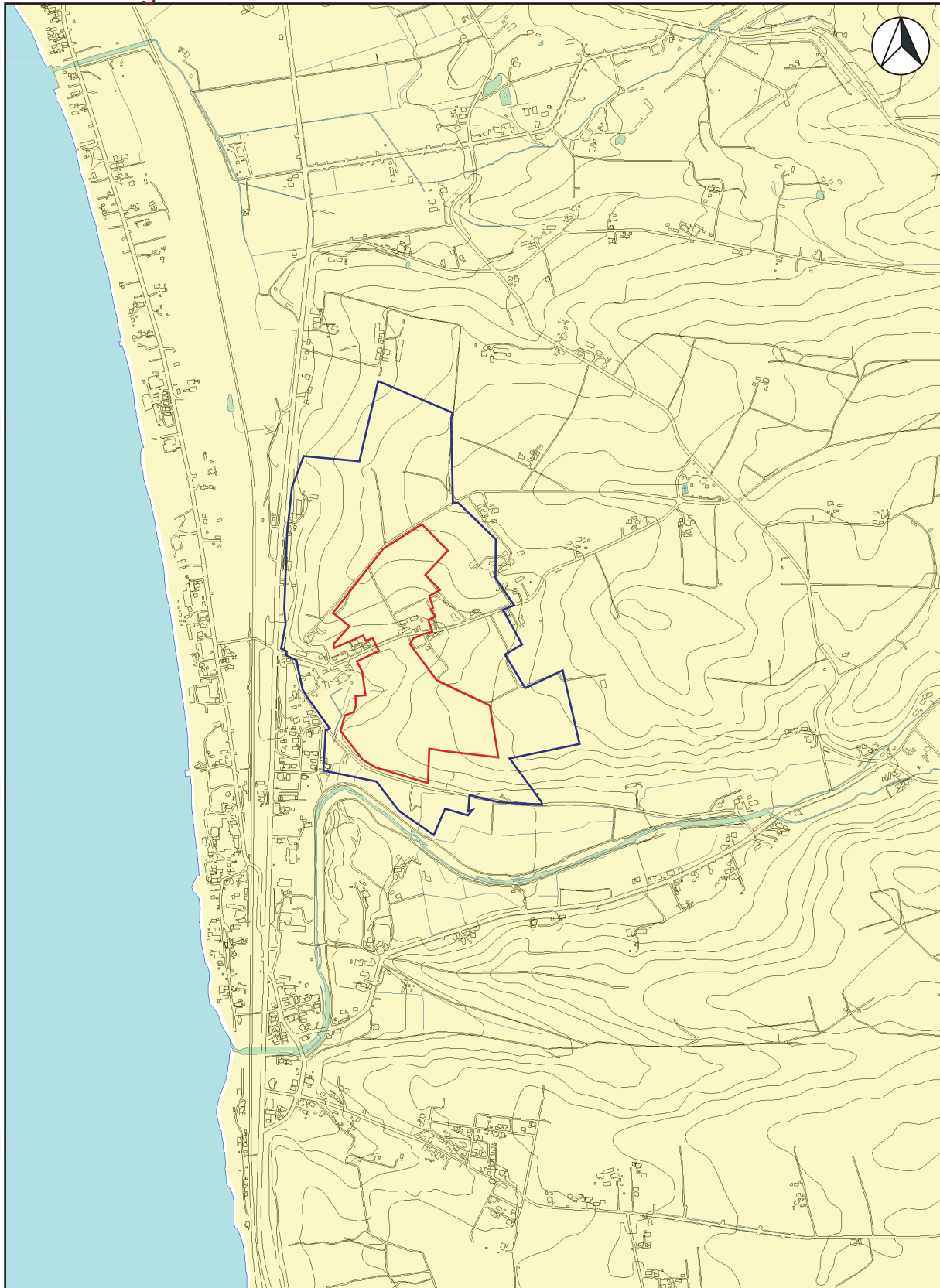
 Forest Act  
(private forests)

 Forest Act  
(reserved forests)

0 1/15,000 1 km

Figure 002-3 Map indicating the legal protection of the buffer zone around the component part (related to laws for land use control)

# 003 Kitakogane Site



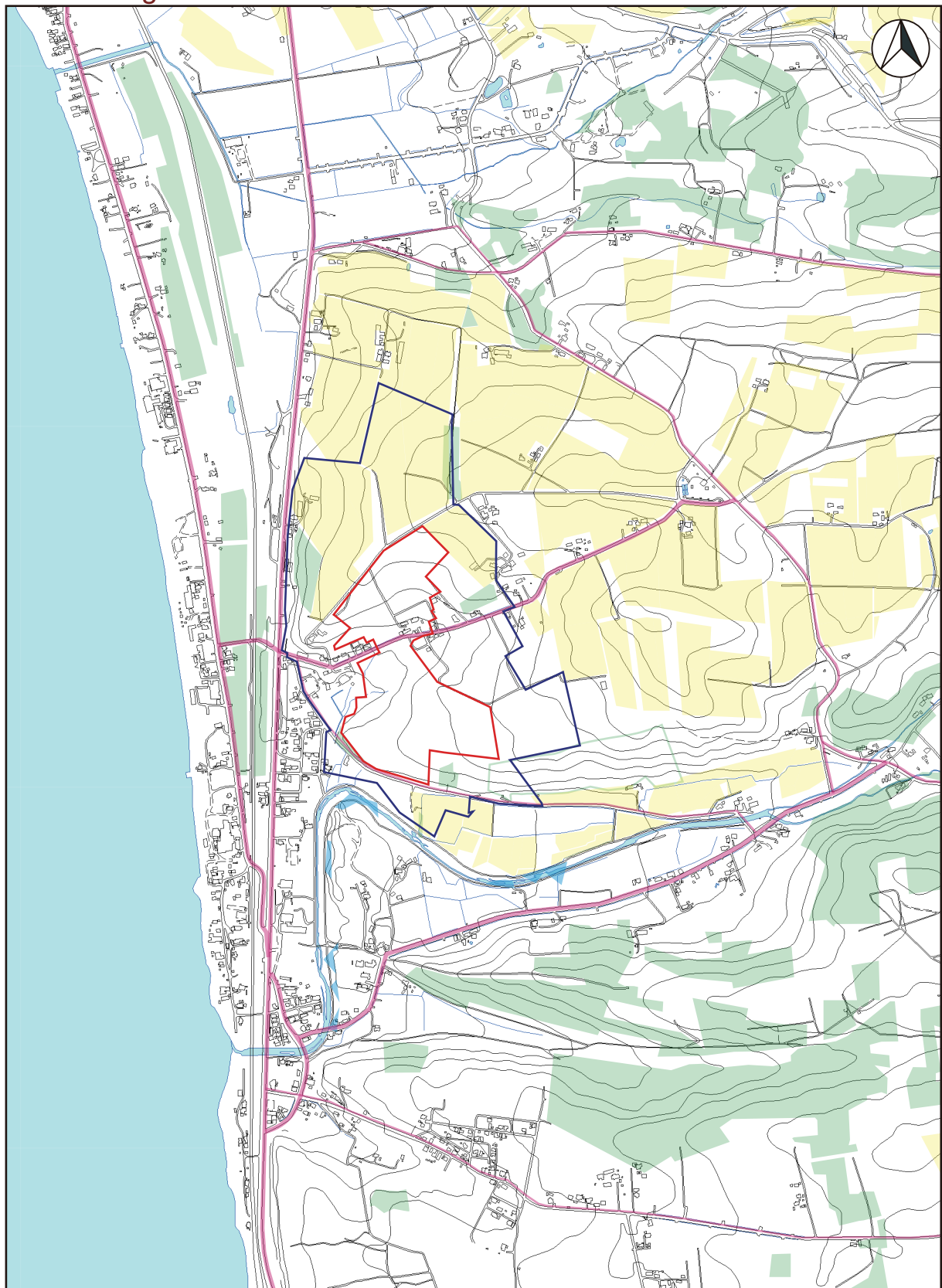
- Property
- Buffer zone
- Hokkaido Landscape Ordinance (Landscape Planning Area)



Figure 003-1 Map indicating the legal protection of the buffer zone around the component part (related to the Landscape Act)



# 003 Kitakogane Site



- Property
- Road Act
- Forest Act (private forest)
- Act Concerning Establishment of Agriculture Promotion Areas
- Buffer zone
- River Act

Figure 003-2 Map indicating the legal protection of the buffer zone around the component part (related to laws for land use control)

# 004 Tagoyano Site / 016 Kamegaoka Burial Site

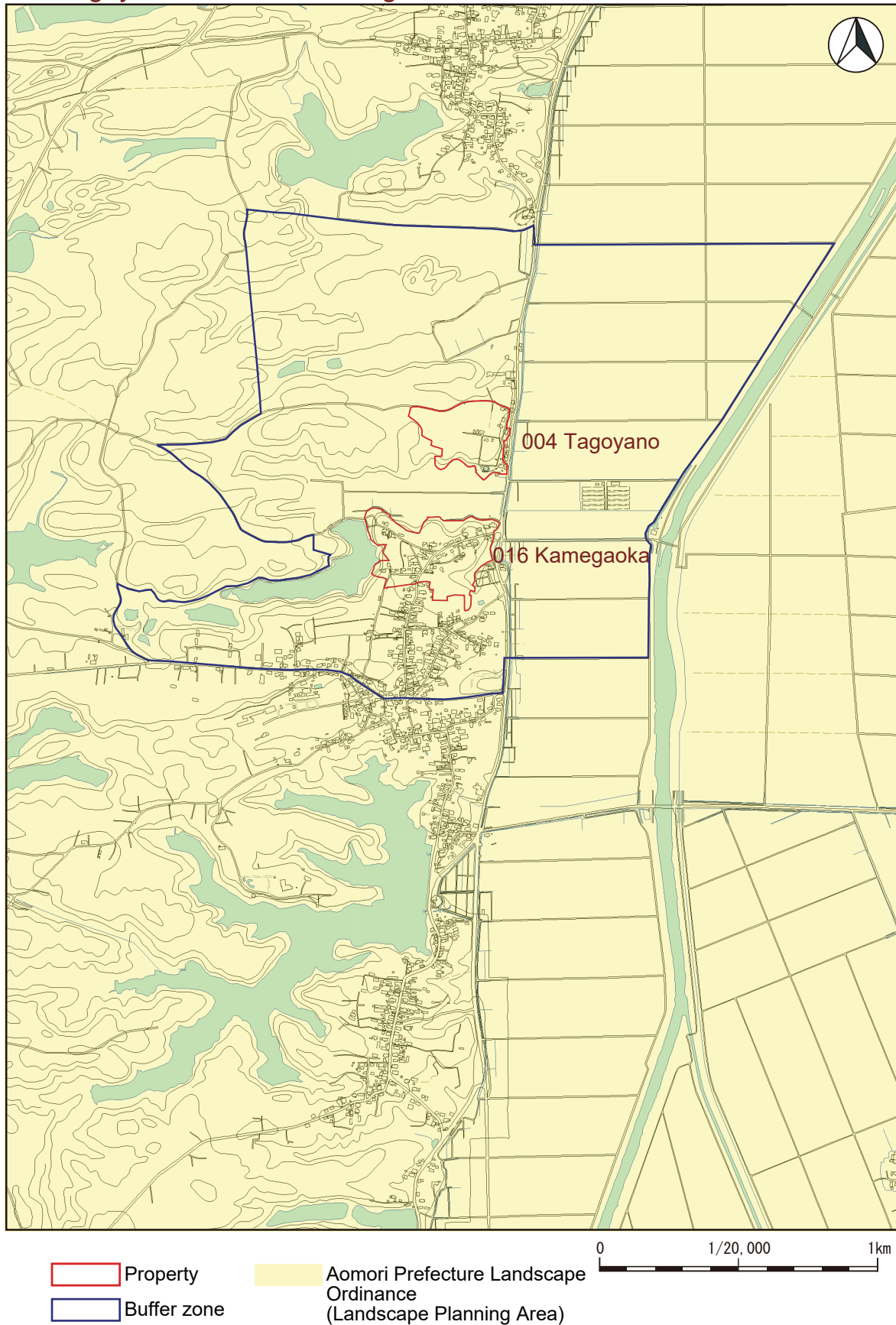


Figure 004-1 Map indicating the legal protection of the buffer zone around the component part (related to the Landscape Act)

004 Tagoyano Site / 016 Kamegaoka Burial Site

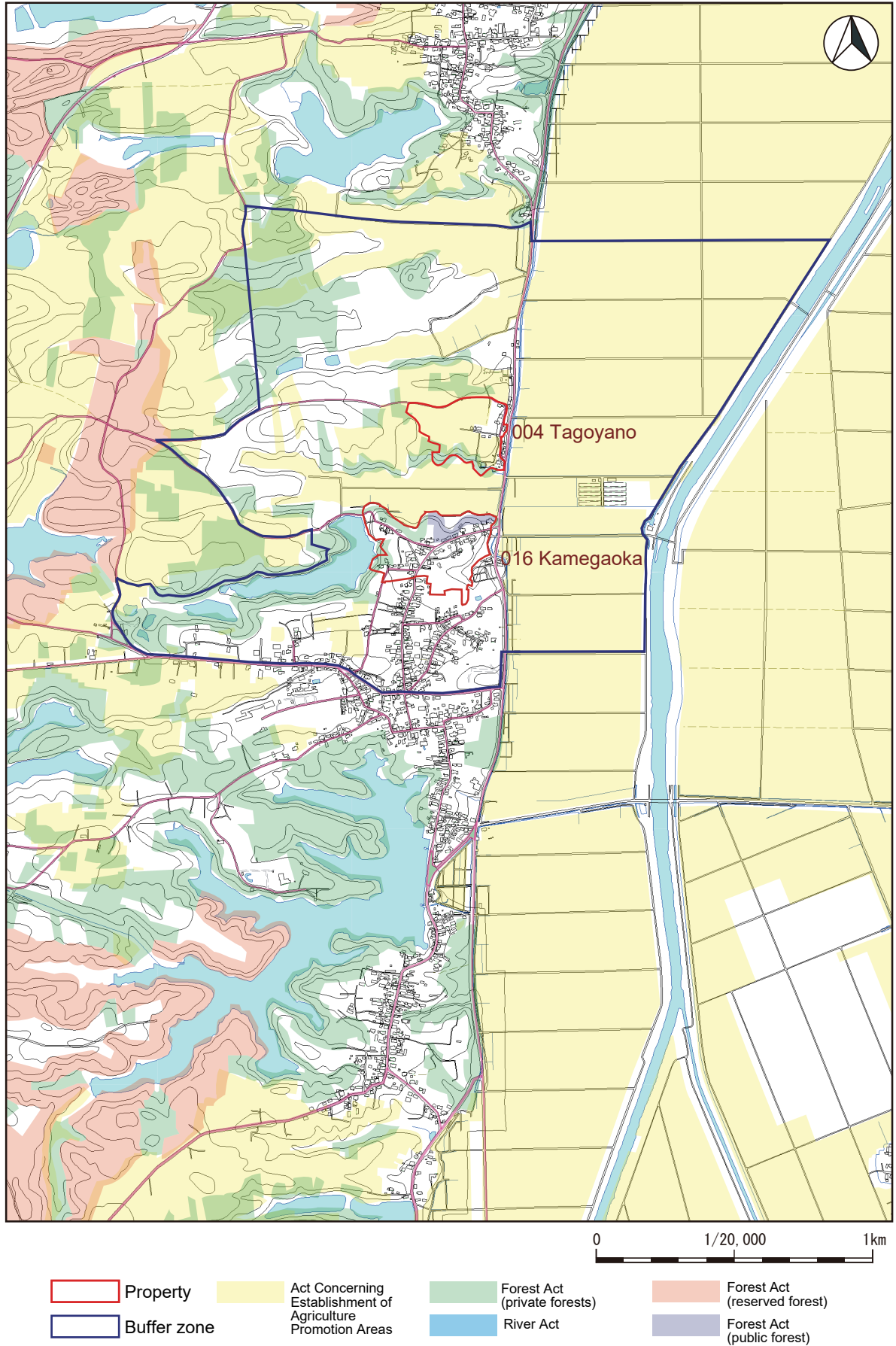


Figure 004-2 Map indicating the legal protection of the buffer zone around the component part (related to laws for land use control)

# 005 Futatsumori Site

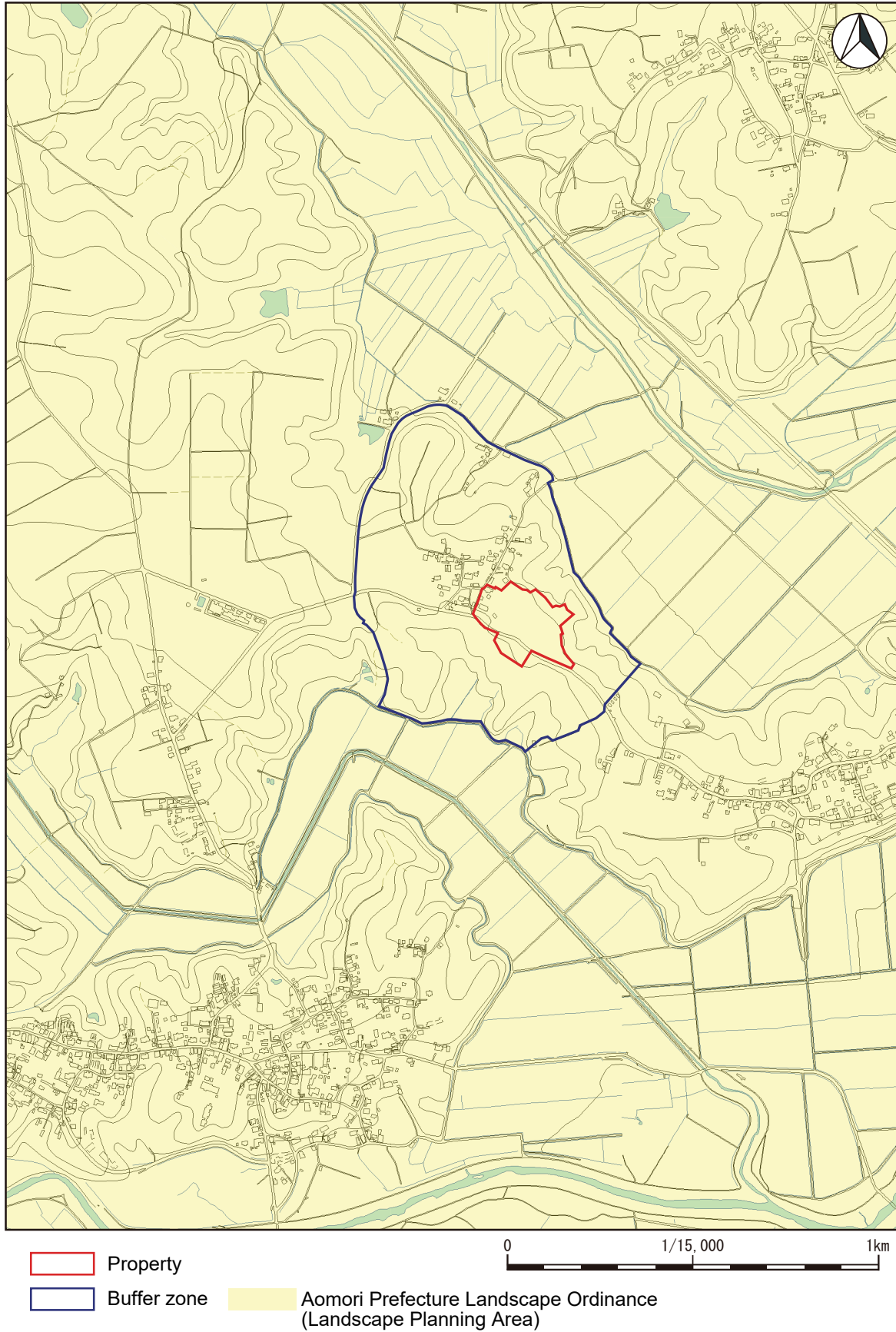


Figure 005-1 Map indicating the legal protection of the buffer zone around the component part (related to the Landscape Act)

# 005 Futatsumori Site

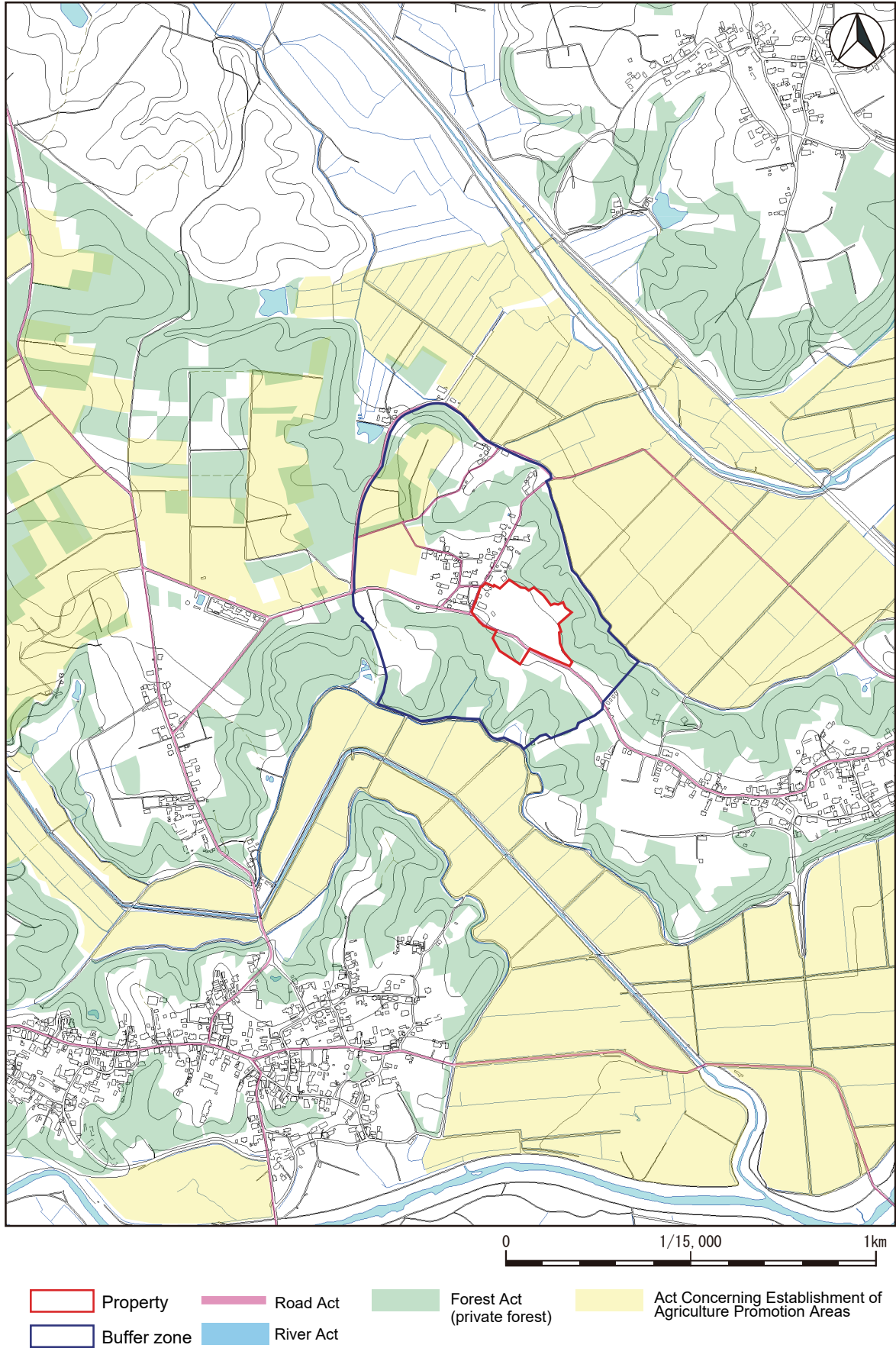
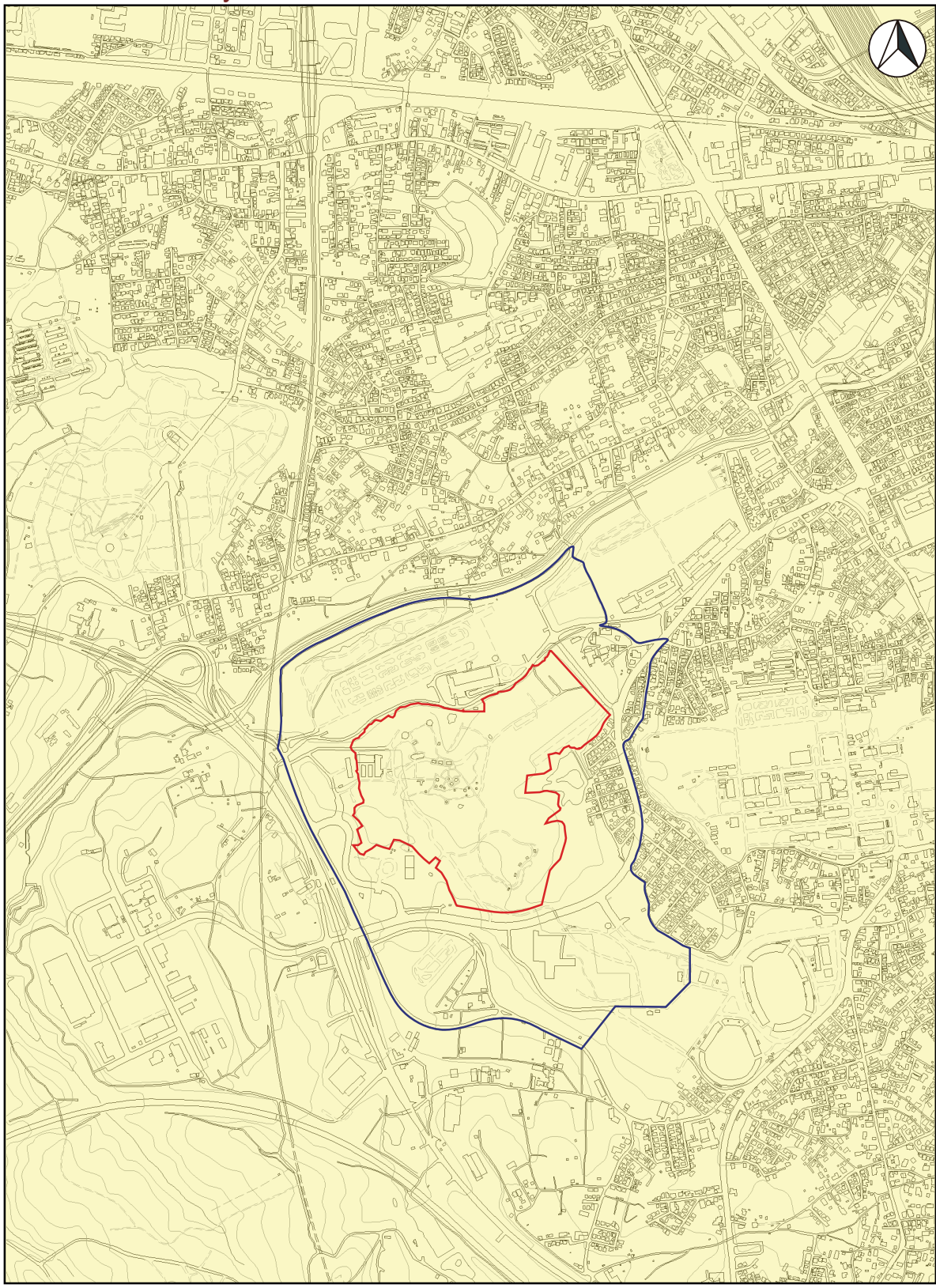


Figure 005-2 Map indicating the legal protection of the buffer zone around the component part (related to laws for land use control)

# 006 Sannai Maruyama Site



- Property
- Buffer zone
- Aomori City Landscape Ordinance (Landscape Planning Area)

0 1/15,000 1km

Figure 006-1 Map indicating the legal protection of the buffer zone around the component part (related to the Landscape Act)

# 006 Sannai Maruyama Site

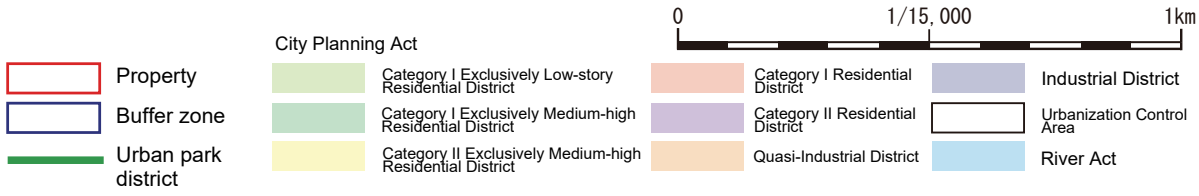
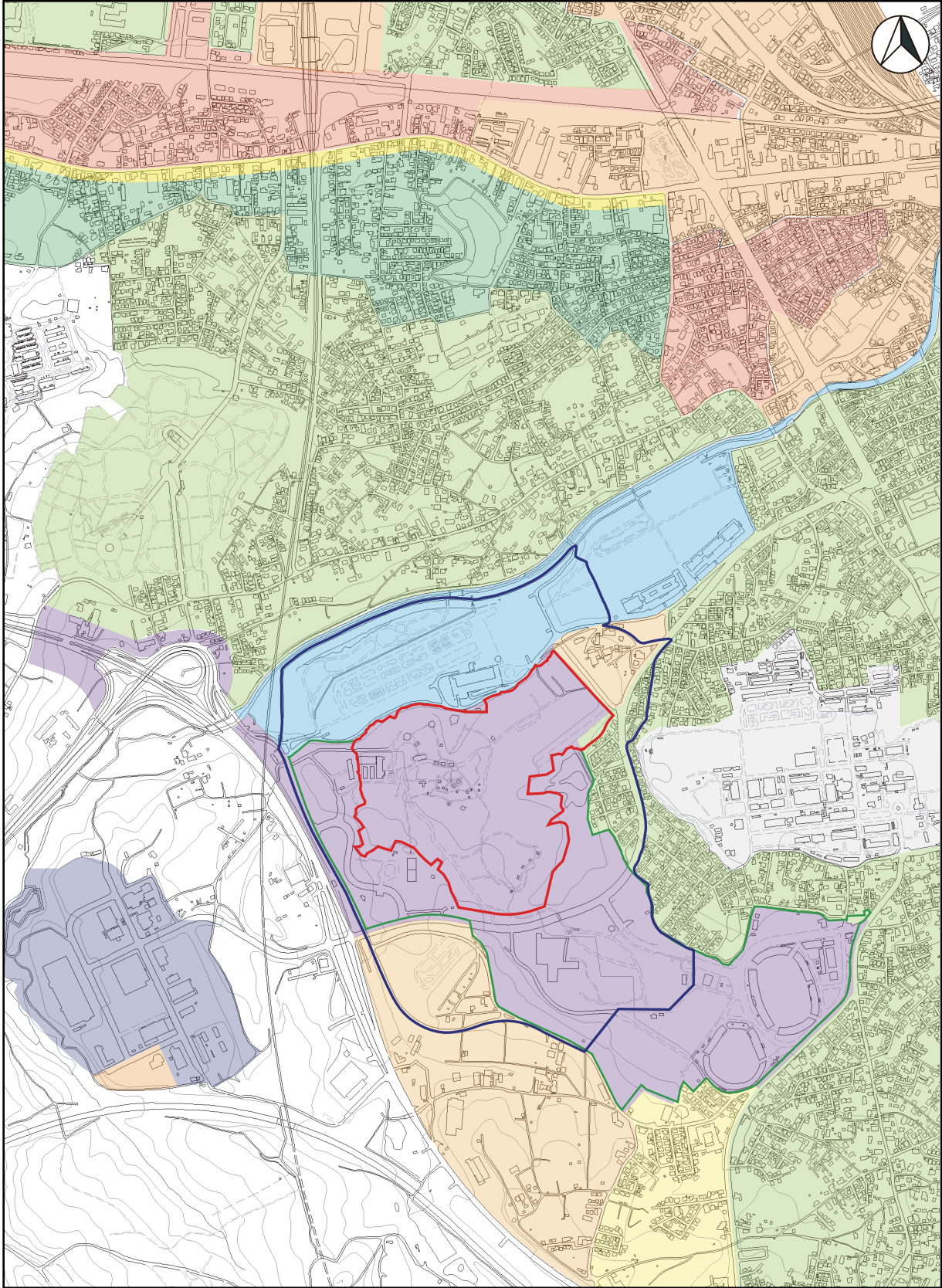


Figure 006-2 Map indicating the legal protection of the buffer zone around the component part (related to laws for land use control)

007 Ofune Site

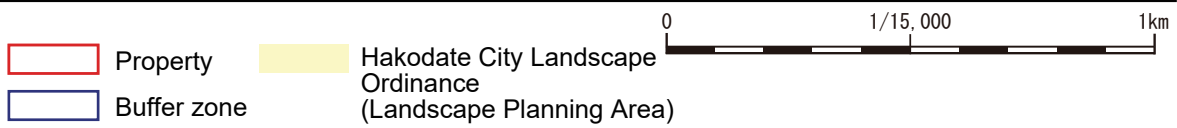
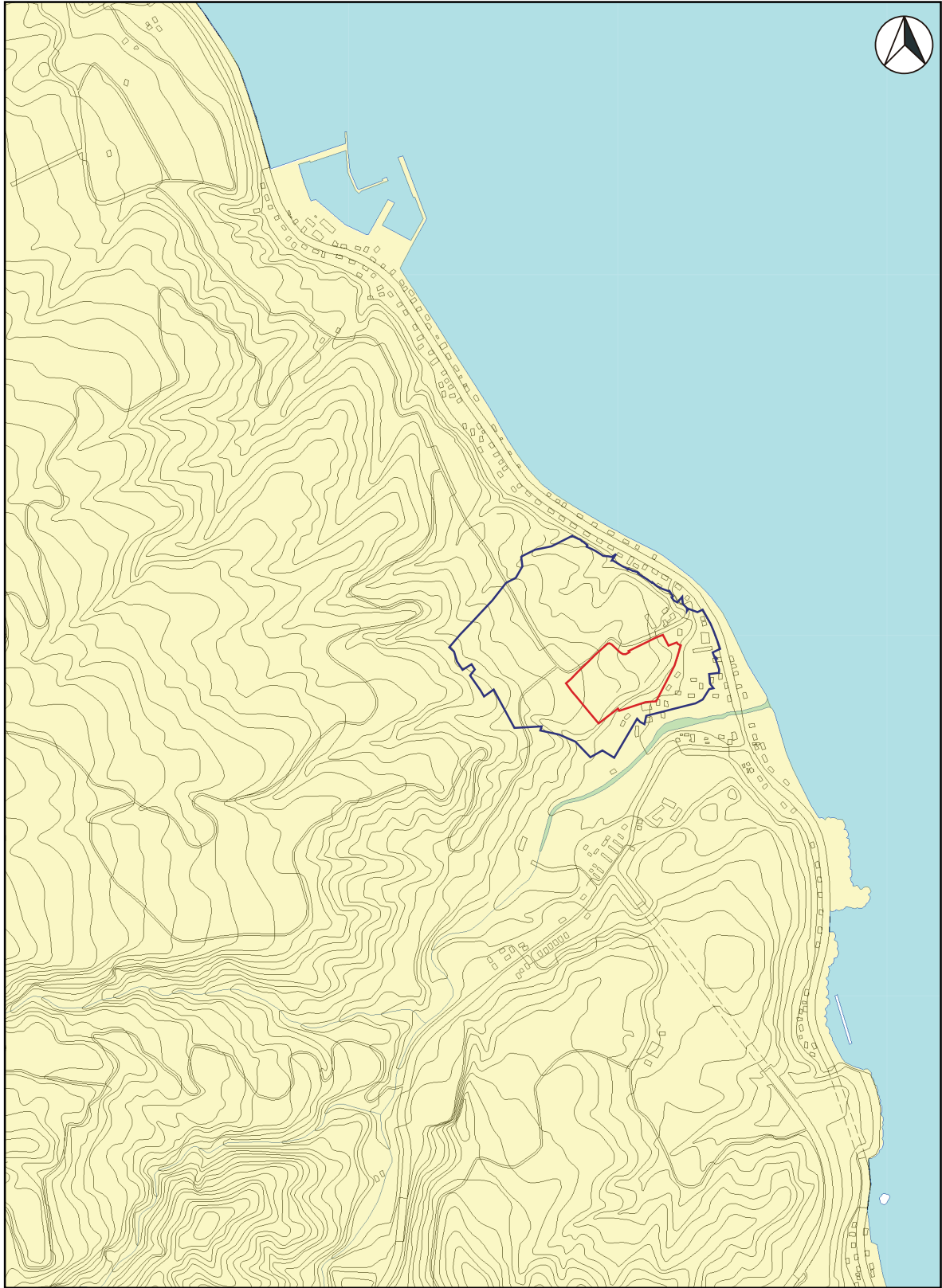
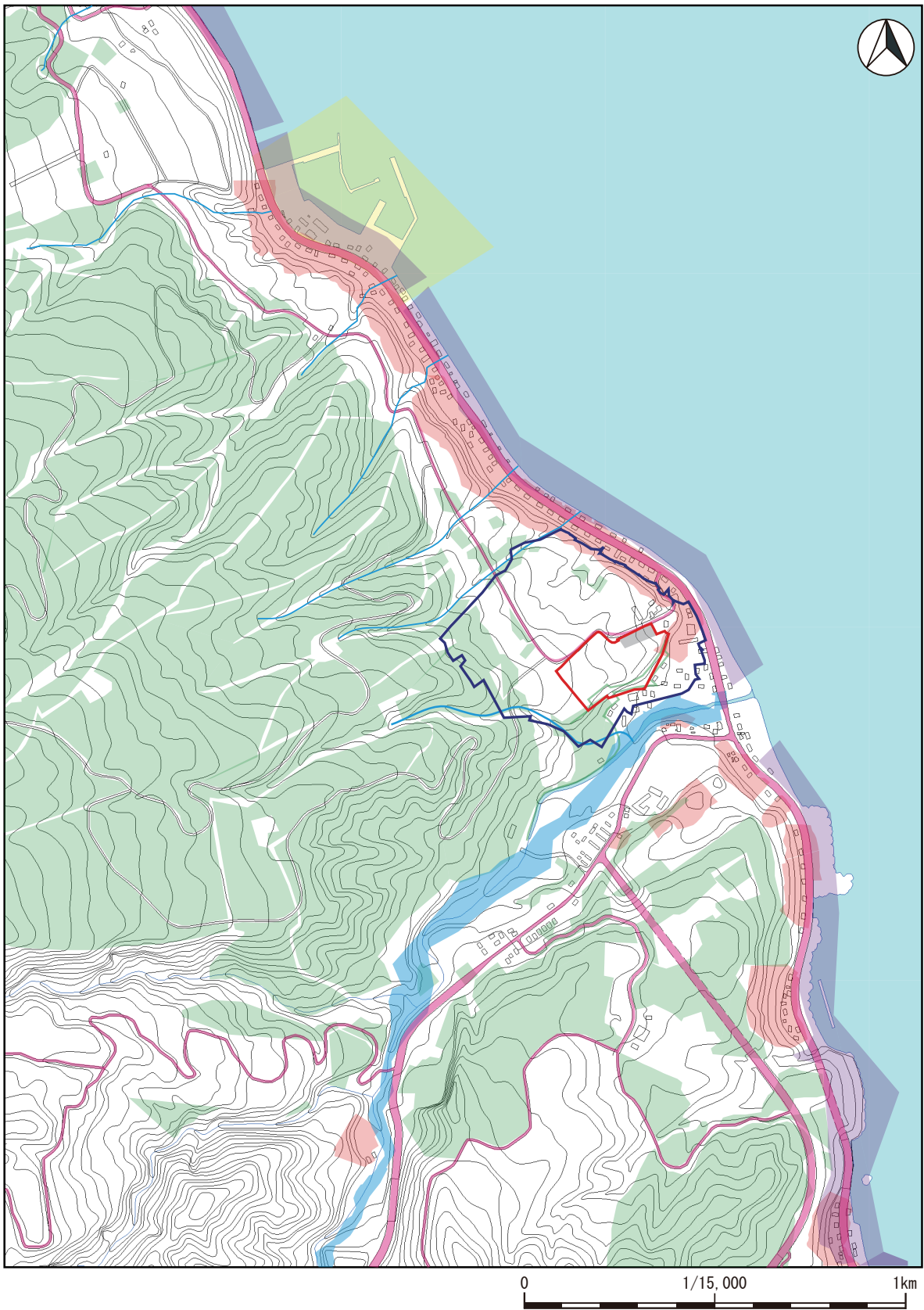


Figure 007-1 Map indicating the legal protection of the buffer zone around the component part (related to the Landscape Act)



# 007 Ofune Site



- |             |   |  |
|-------------|---|--|
| Property    | Road Act  | River Act and Hakodate City Ordinary River Control Ordinance |
| Buffer zone | Act Concerning the Sediment-related Disaster Prevention Measures in Sediment-related Disaster Prone | Fishing Ports and Fishing Grounds Act                        |
|             | Forest Act (private forests)  | Coast Act  |
|             |   | Hakodate City Graveyard Ordinance                            |

Figure 007-2 Map indicating the legal protection of the buffer zone around the component part (related to laws for land use control)

008 Goshono Site

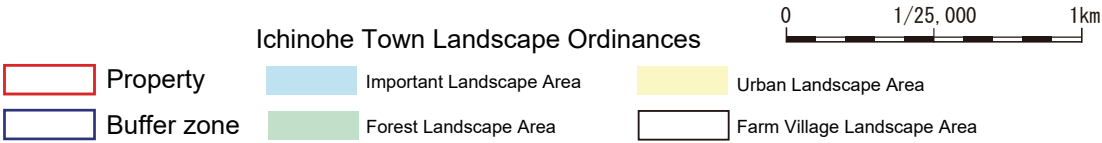
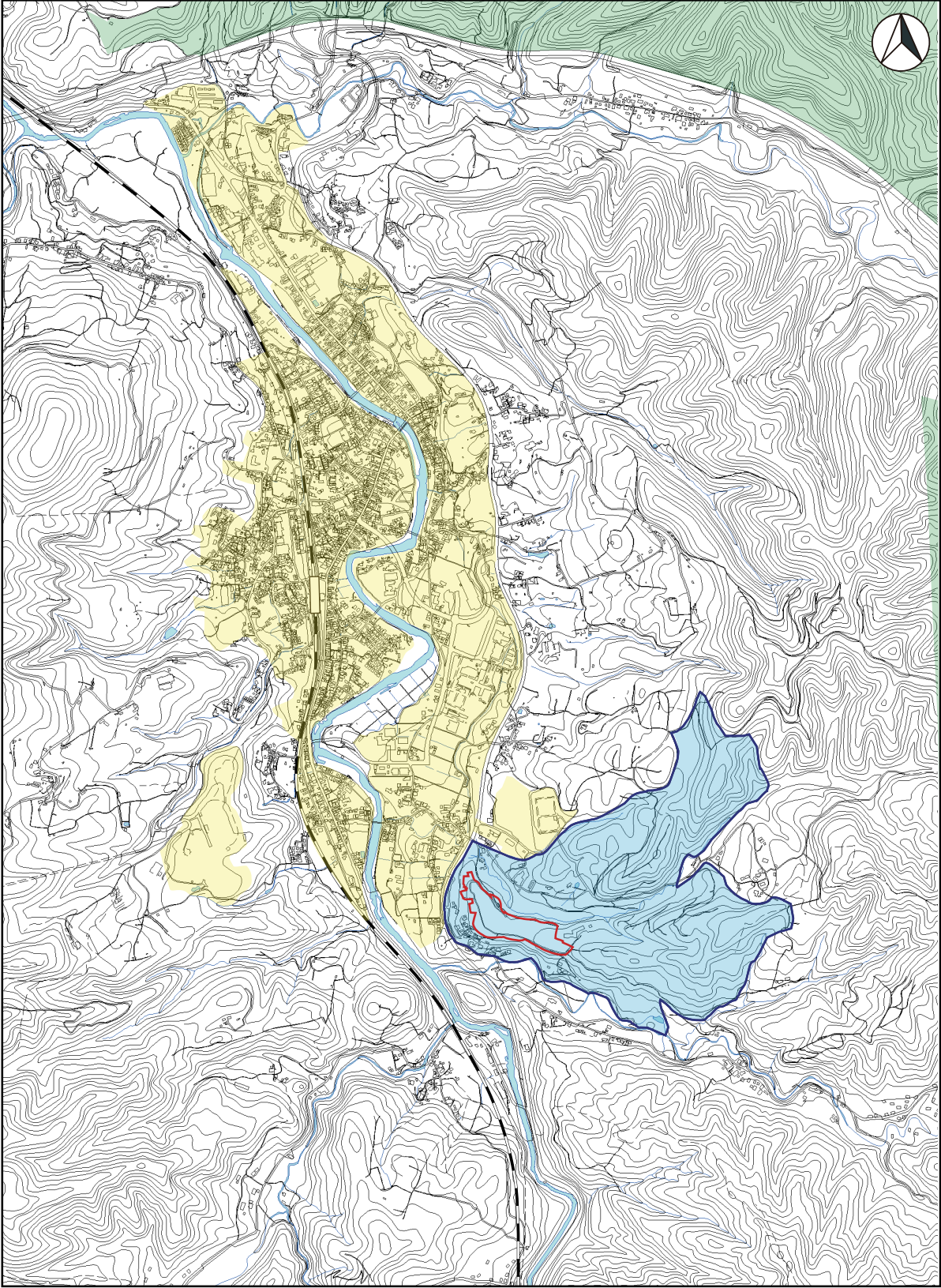


Figure 008-1 Map indicating the legal protection of the buffer zone around the component part (related to the Landscape Act)

# 008 Goshono Site

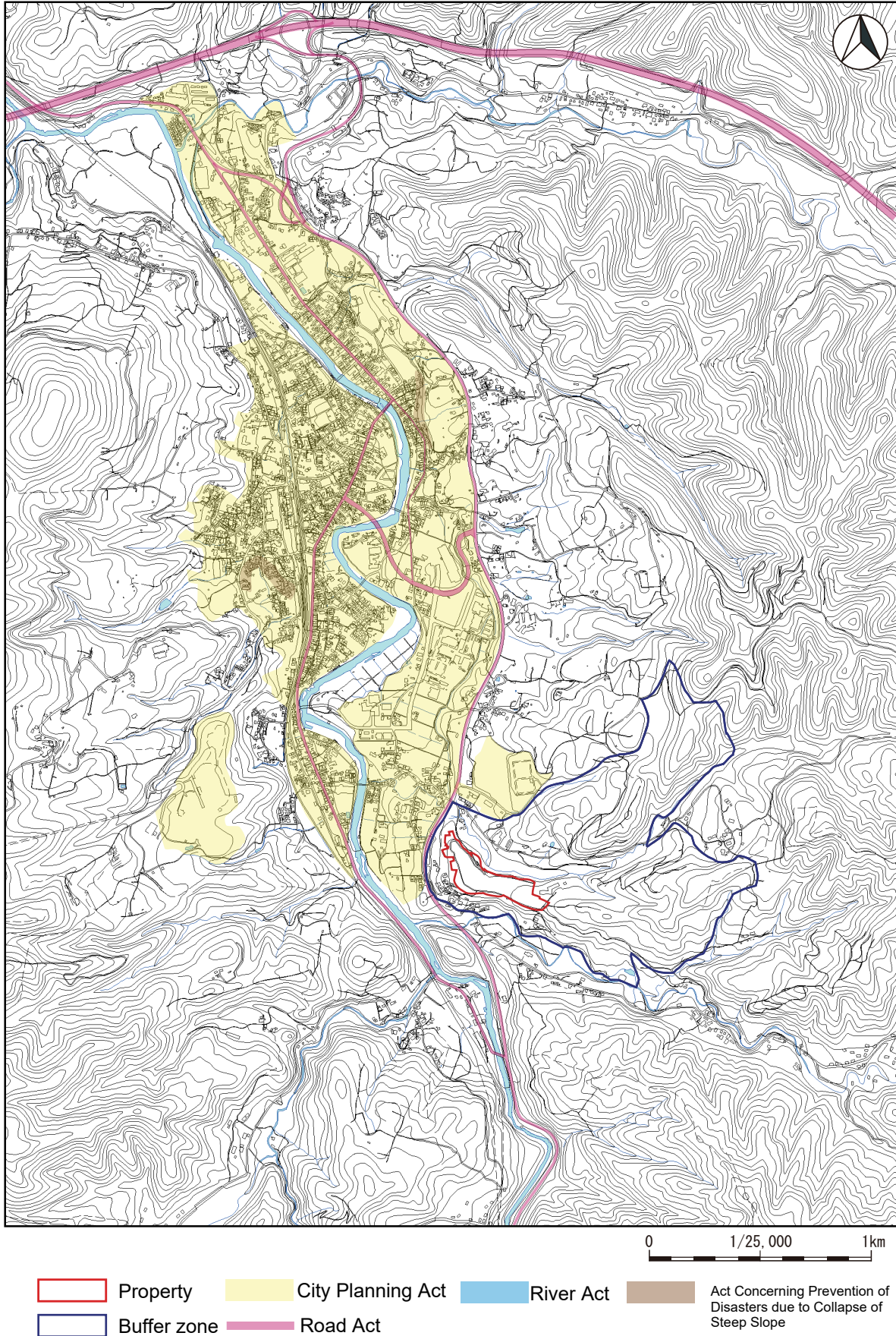
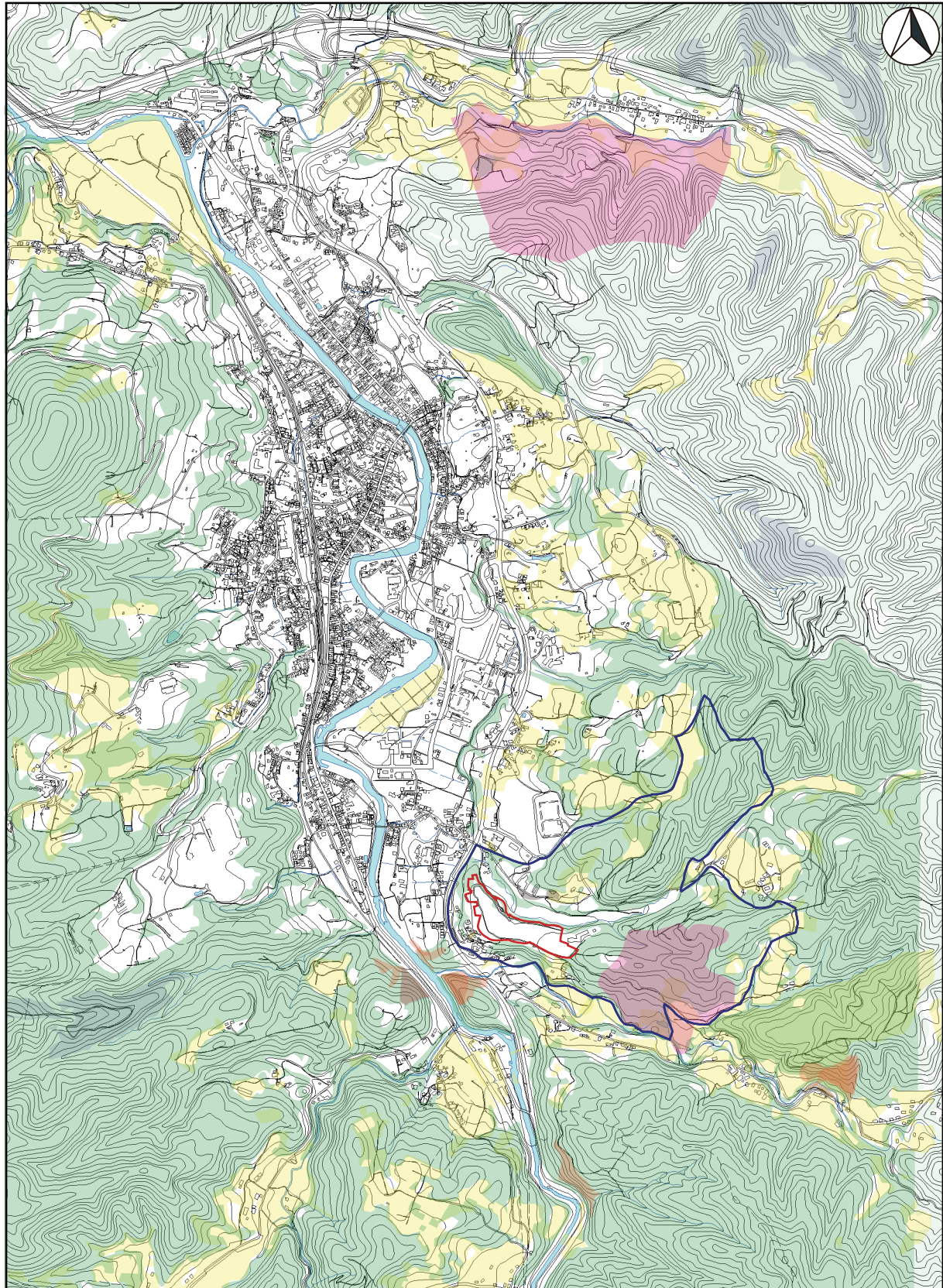


Figure 008-2 Map indicating the legal protection of the buffer zone around the component part (related to laws for land use control)

# 008 Goshono Site



0 1/25,000 1km

- |   |  |   |   |
|---|--|---|---|
| <span style="border: 1px solid red; display: inline-block; width: 20px; height: 10px;"></span> Property     | <span style="background-color: #90EE90; display: inline-block; width: 20px; height: 10px;"></span> Forest Act (private forests)                                | <span style="background-color: #9370DB; display: inline-block; width: 20px; height: 10px;"></span> Forest Act (national forests, prefectural forests) | <span style="background-color: #FFDAB9; display: inline-block; width: 20px; height: 10px;"></span> Forest Act (reserved forests)            |
| <span style="border: 1px solid blue; display: inline-block; width: 20px; height: 10px;"></span> Buffer zone | <span style="background-color: #FFFF00; display: inline-block; width: 20px; height: 10px;"></span> Act Concerning Establishment of Agriculture Promotion Areas | <span style="background-color: #FFB6C1; display: inline-block; width: 20px; height: 10px;"></span> Landslide Prevention Area (Forestry Agency)        | <span style="background-color: #808080; display: inline-block; width: 20px; height: 10px;"></span> Act Concerning Graveyards, Burials, etc. |

Figure 008-3 Map indicating the legal protection of the buffer zone around the component part (related to laws for land use control)

# 009 Irie Site / 015 Takasago Burial Site

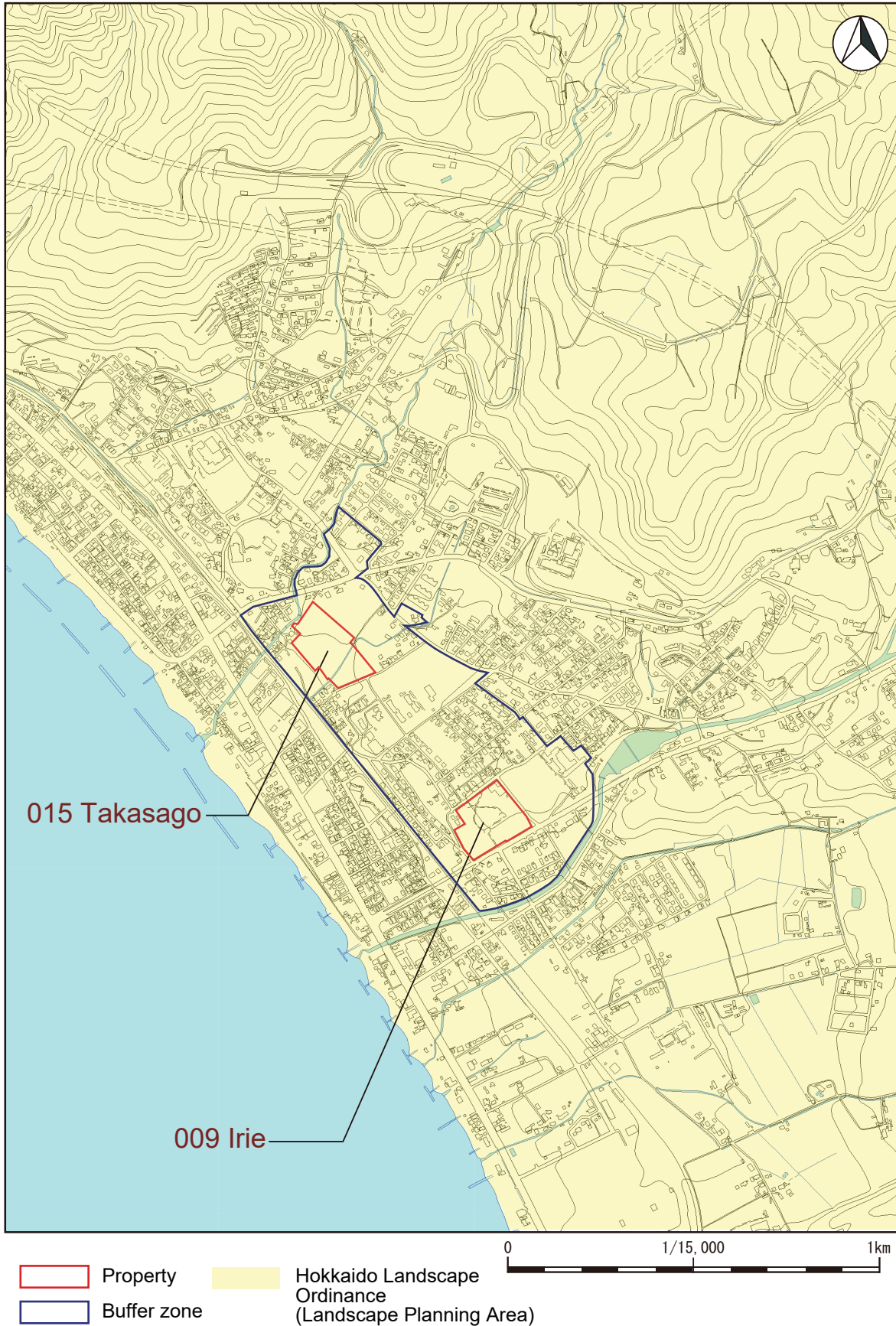
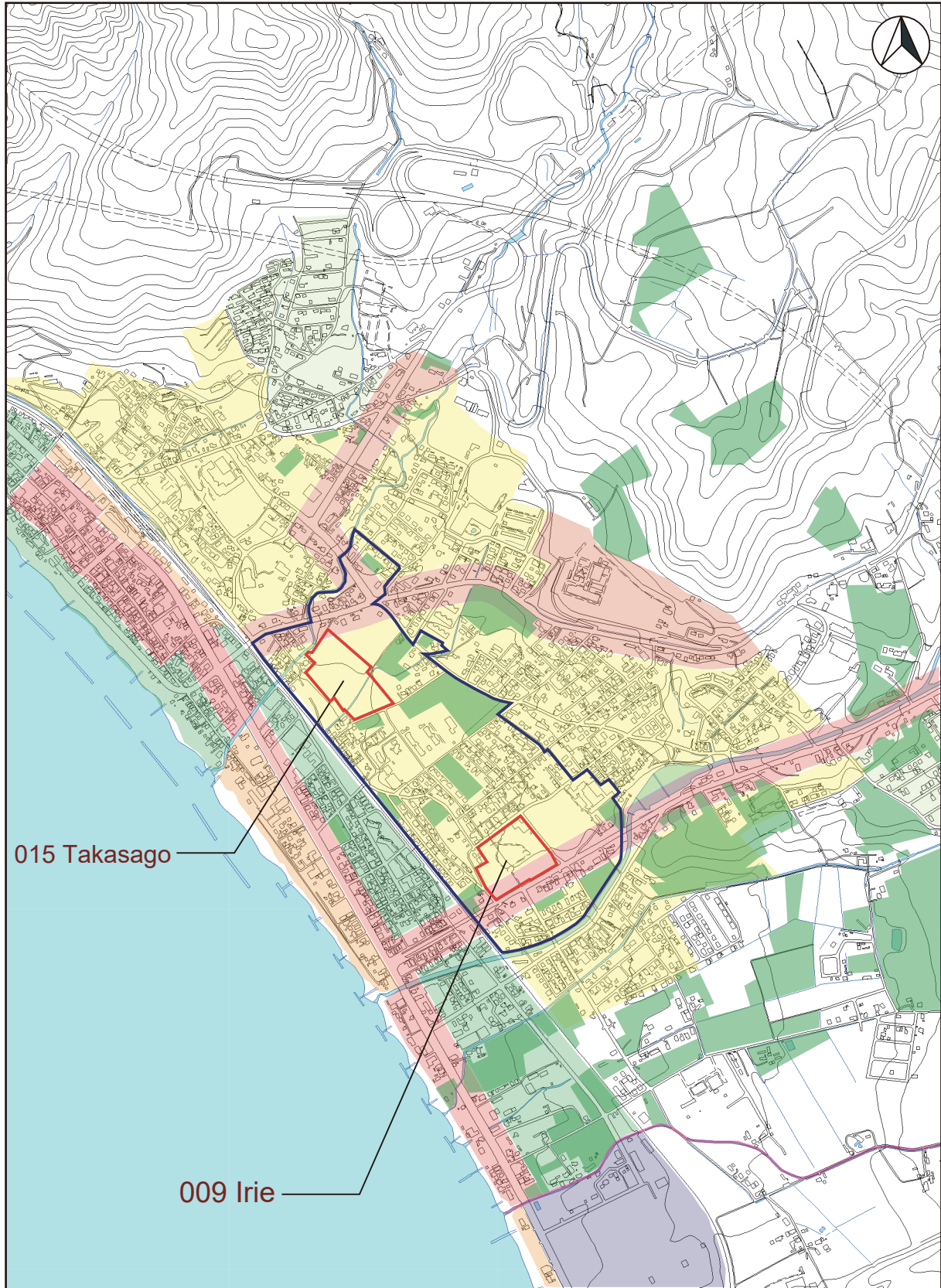


Figure 009-1 Map indicating the legal protection of the buffer zone around the component part (related to the Landscape Act)

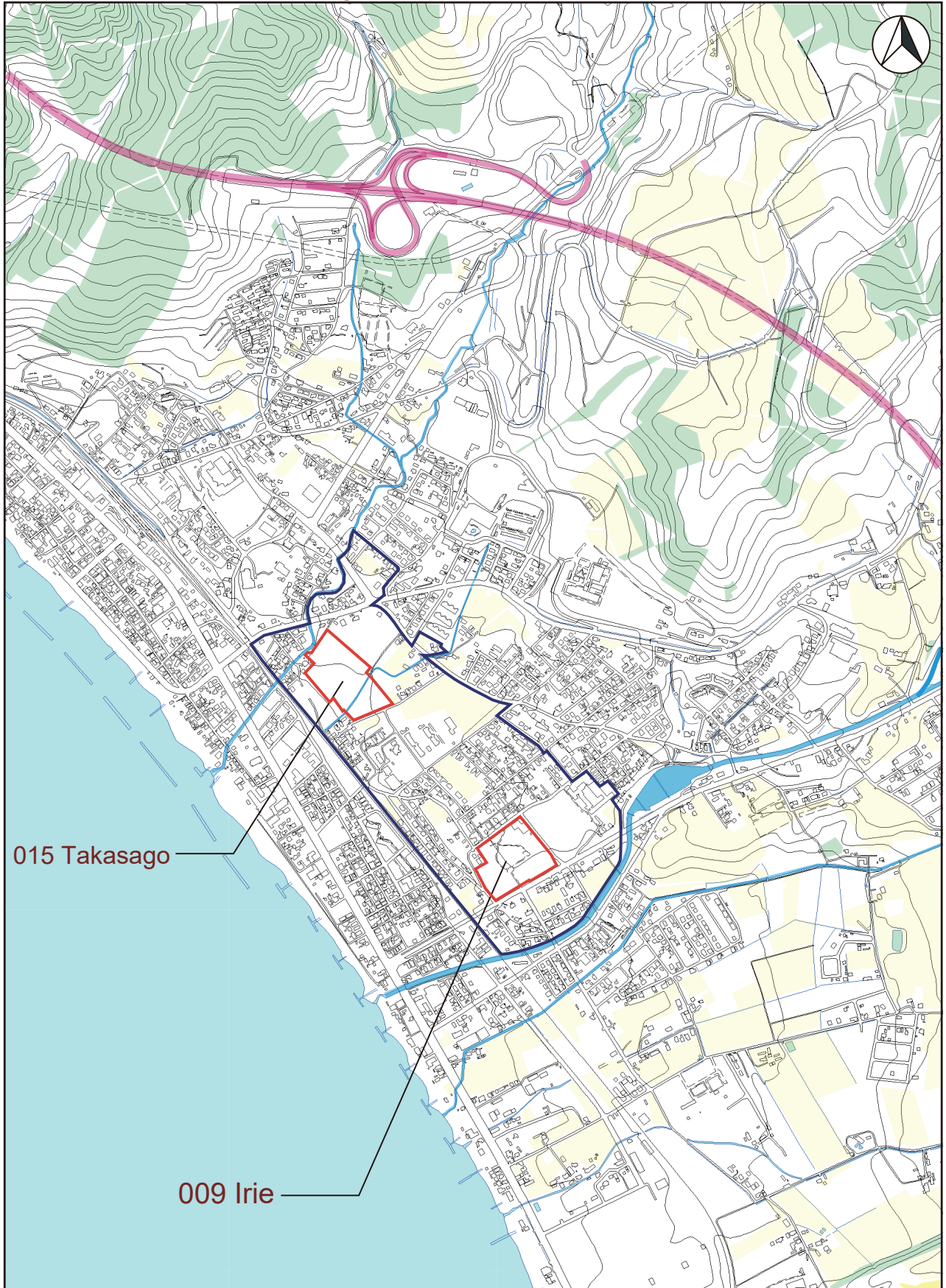
# 009 Irie Site / 015 Takasago Burial Site



0 1/15,000 1km

Figure 009-2 Map indicating the legal protection of the buffer zone around the component part (related to laws for land use control)

# 009 Irie Site / 015 Takasago Burial Site



- Property
- Buffer zone
- Road Act
- River Act (River area)
- Forest Act (private forests)
- Act Concerning Establishment of Agriculture Promotion Areas

Figure 009-3 Map indicating the legal protection of the buffer zone around the component part (related to laws for land use control)

# 010 Komakino Stone Circle

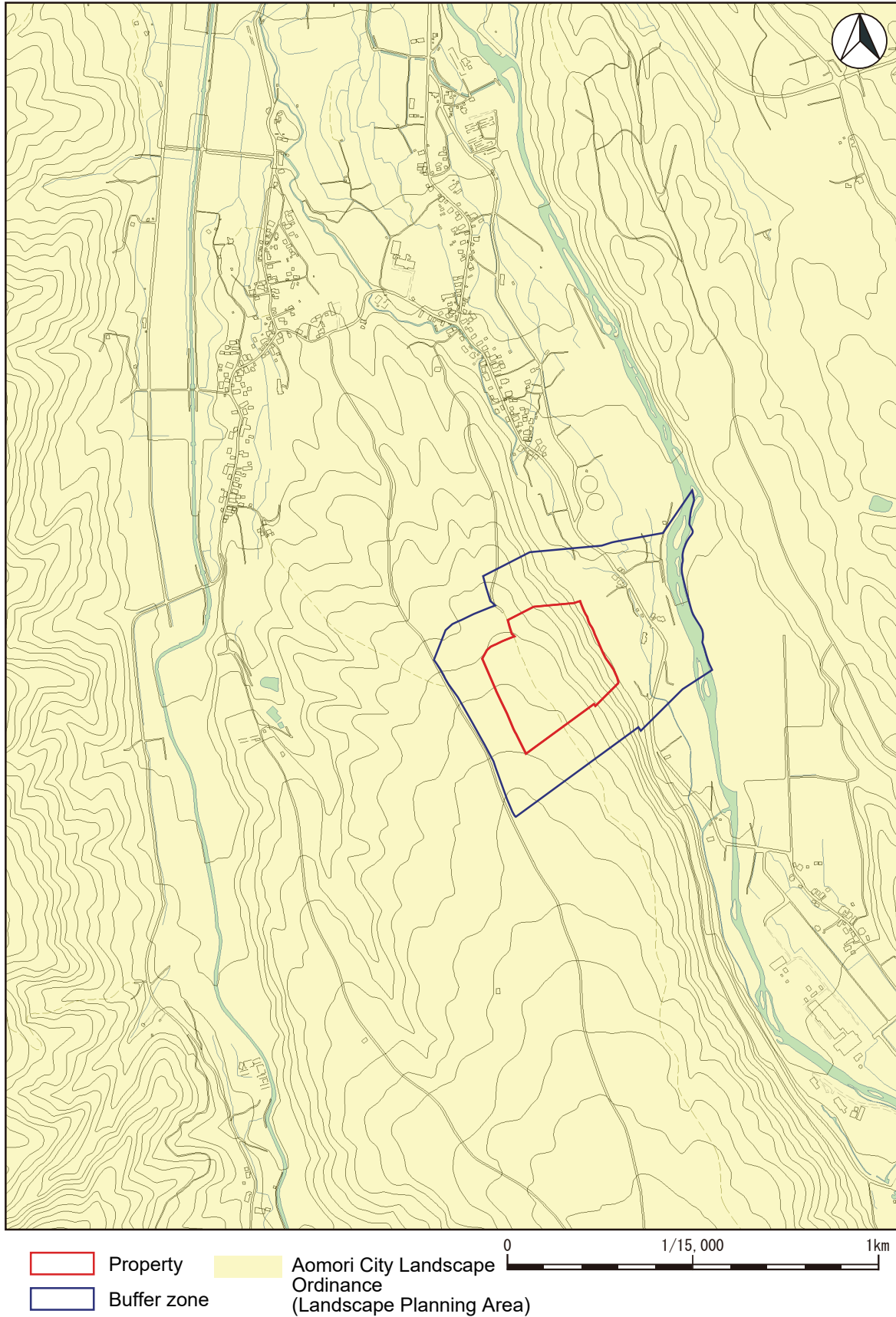
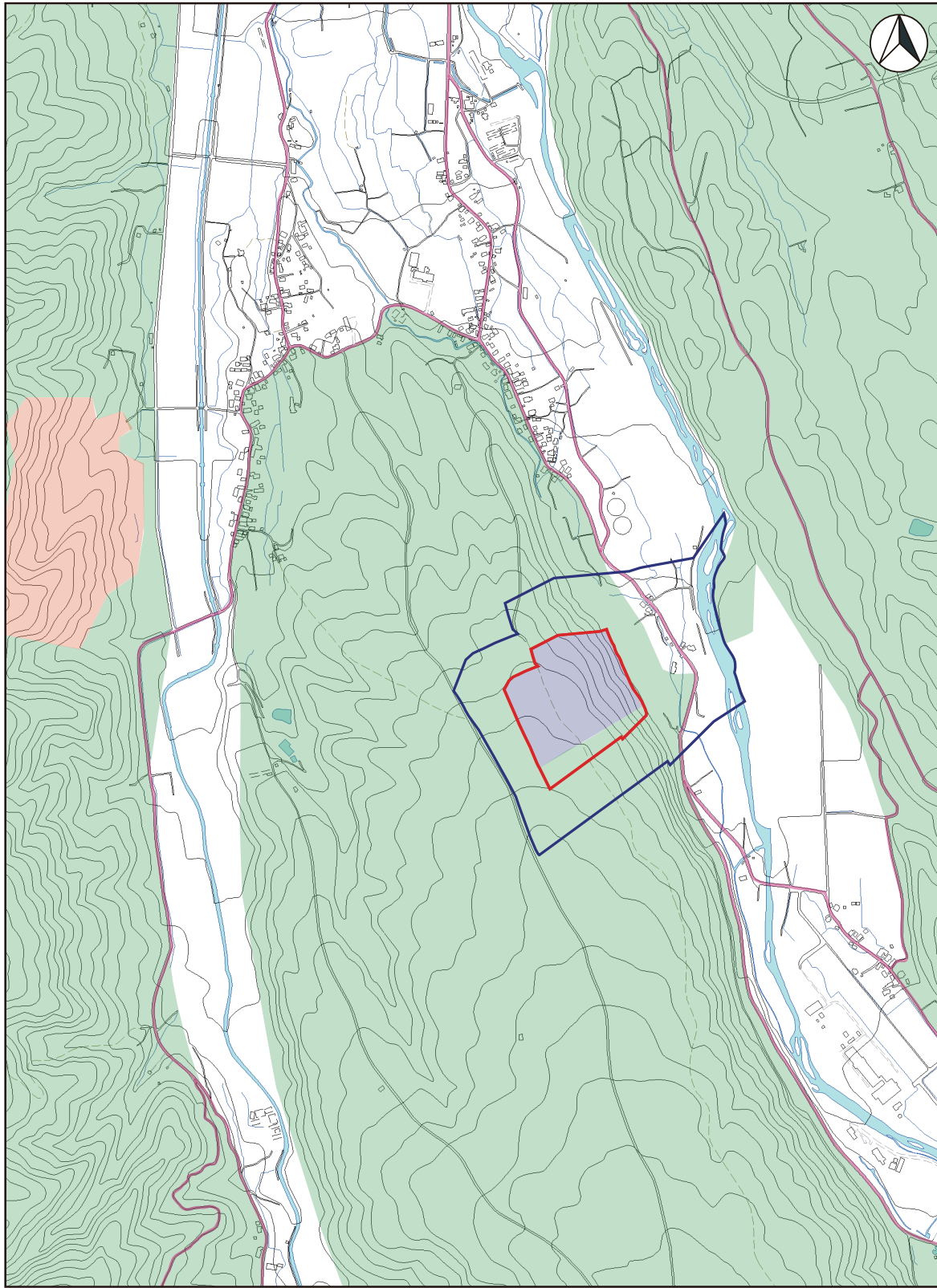


Figure 010-1 Map indicating the legal protection of the buffer zone around the component part (related to the Landscape Act)



# 010 Komakino Stone Circle



- Property
- Road Act
- Forest Act (private forests)
- Forest Act (national forests, public forests)
- Buffer zone
- River Act
- Forest Act (reserved forests)

Figure 010-2 Map indicating the legal protection of the buffer zone around the component part (related to laws for land use control)

# 010 Komakino Stone Circle

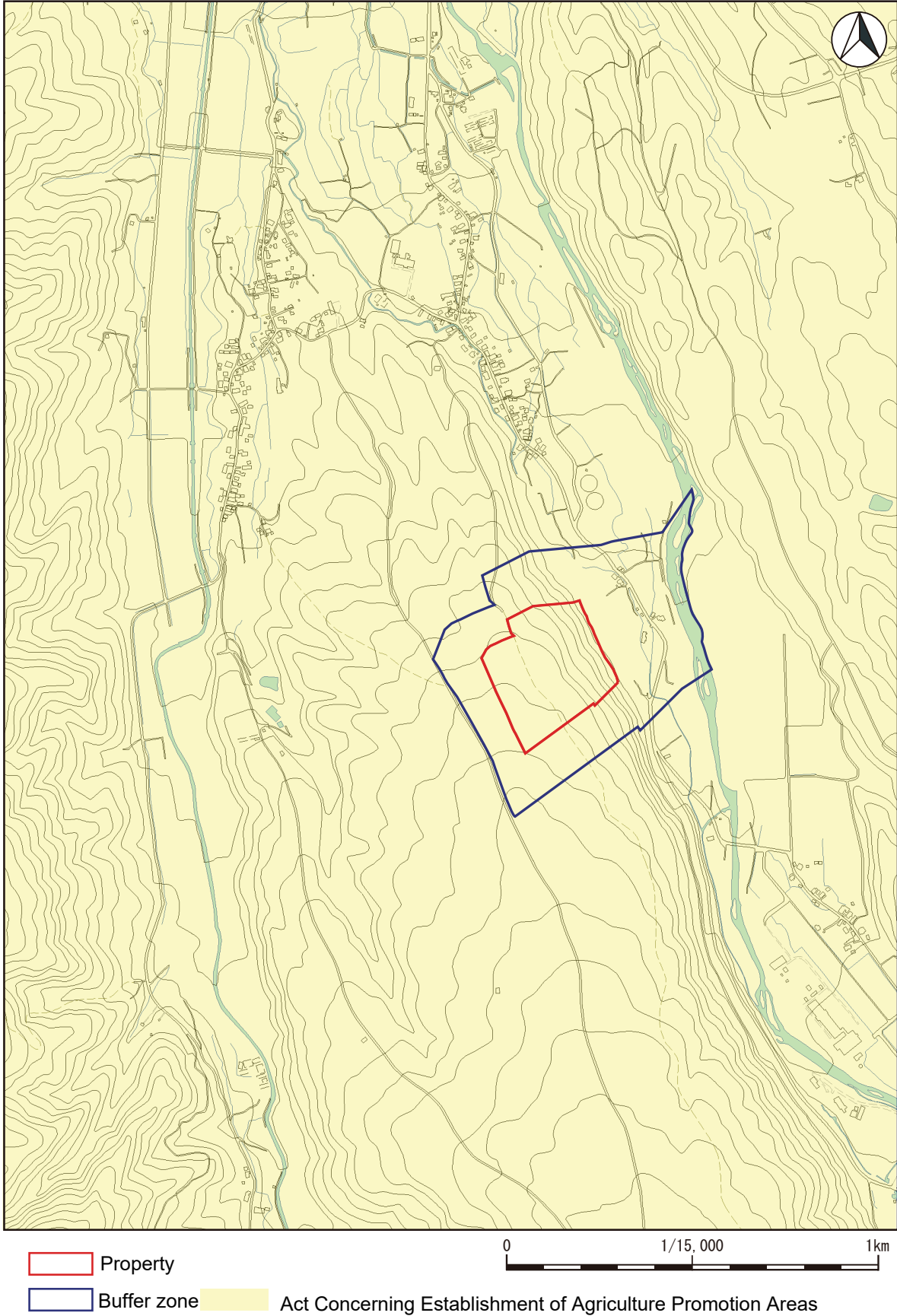


Figure 010-3 Map indicating the legal protection of the buffer zone around the component part (related to laws for land use control)

# 011 Isedotai Stone Circles

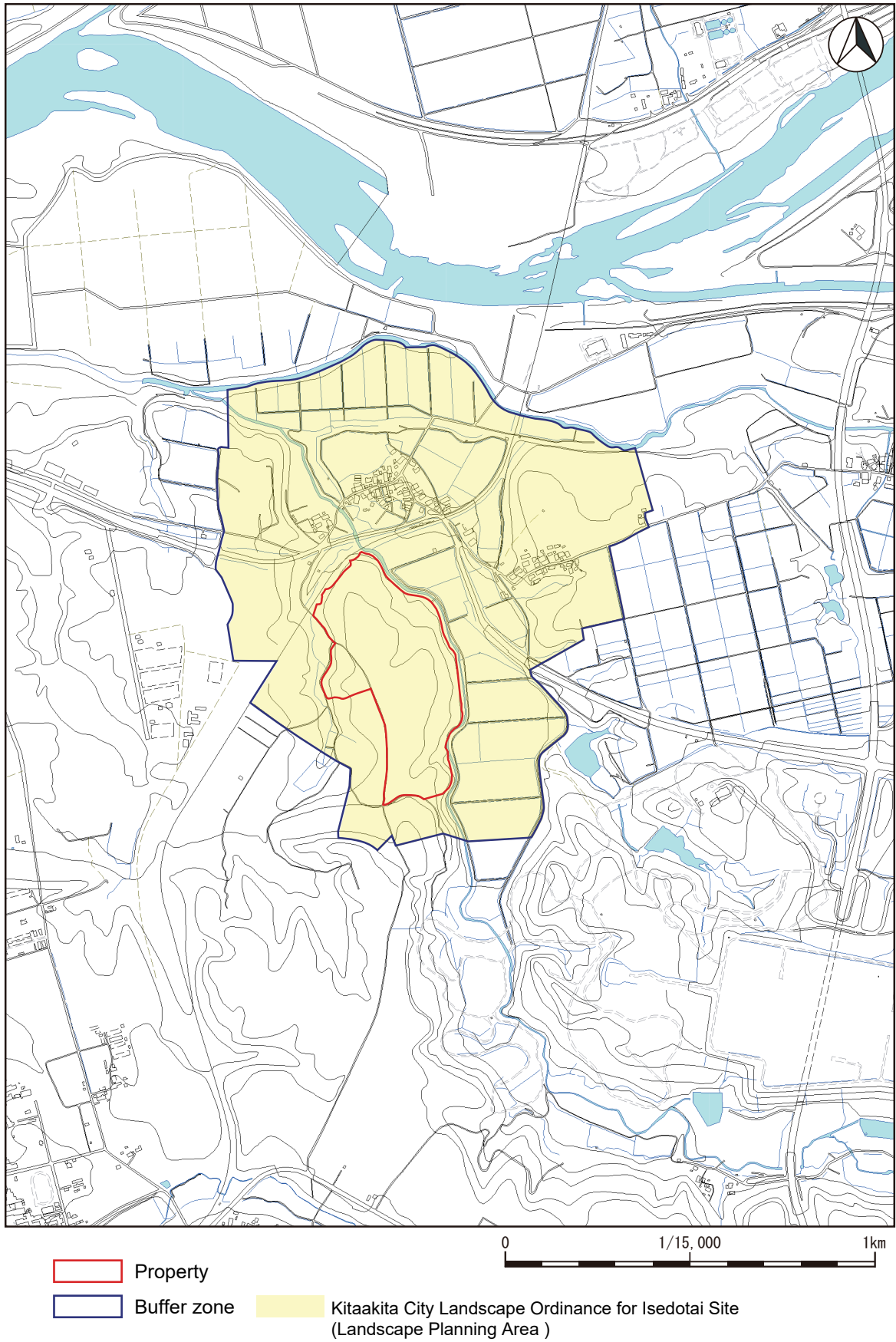


Figure 011-1 Map indicating the legal protection of the buffer zone around the component part (related to the Landscape Act)

# 011 Isedotai Stone Circles

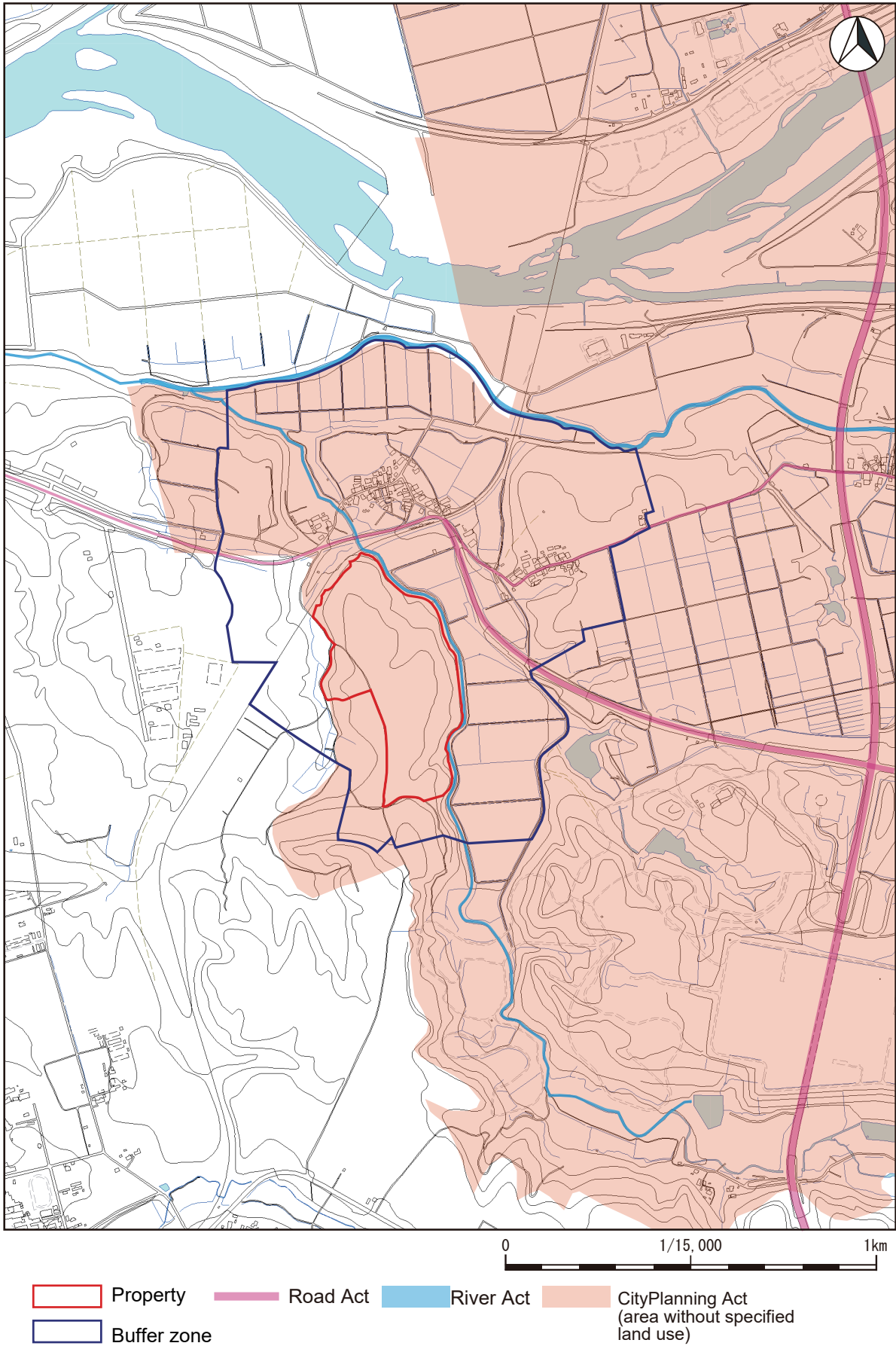


Figure 011-2 Map indicating the legal protection of the buffer zone around the component part (related to laws for land use control)

# 011 Isedotai Stone Circles

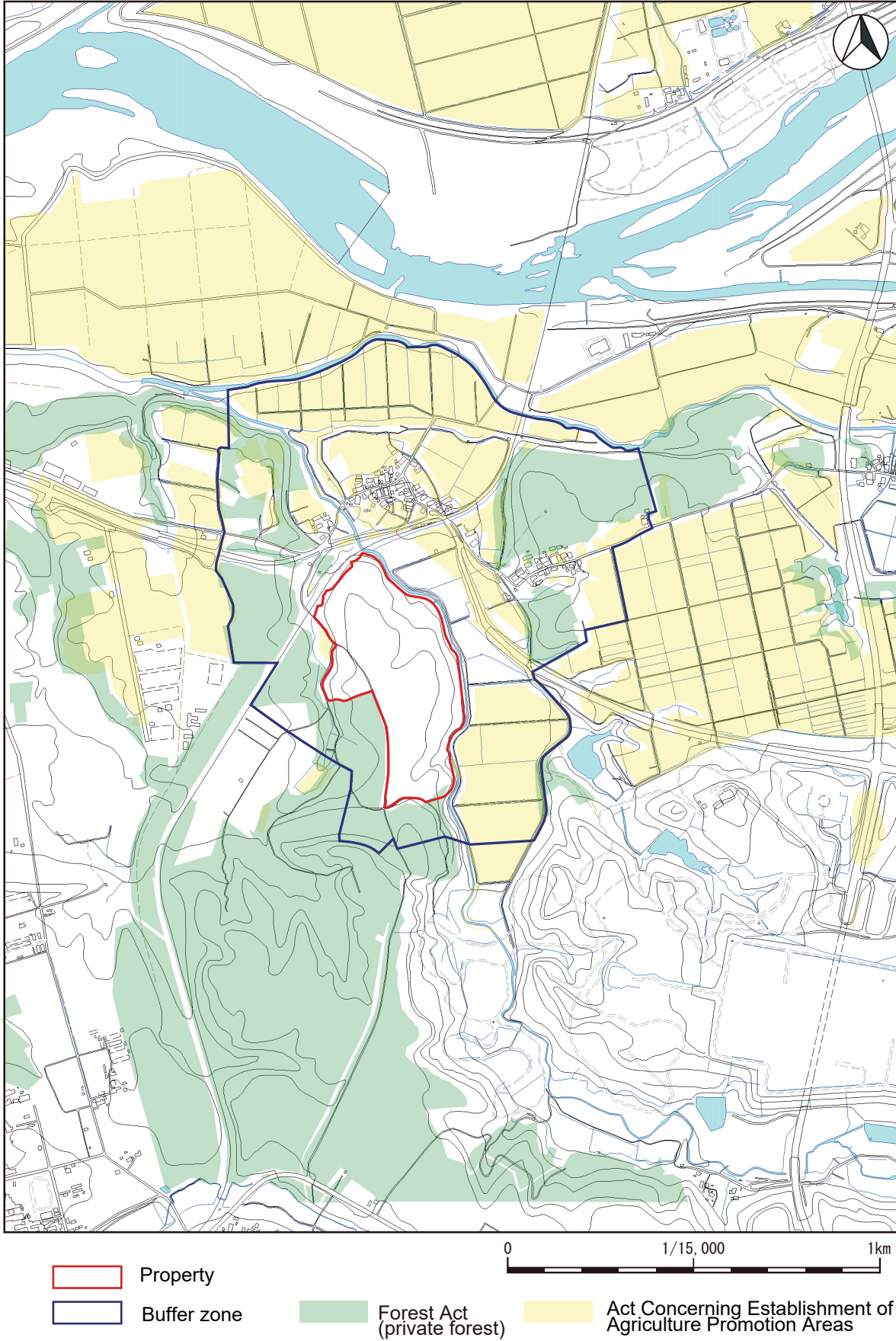


Figure 011-3 Map indicating the legal protection of the buffer zone around the component part (related to laws for land use control)

# 012 Oyu Stone Circles

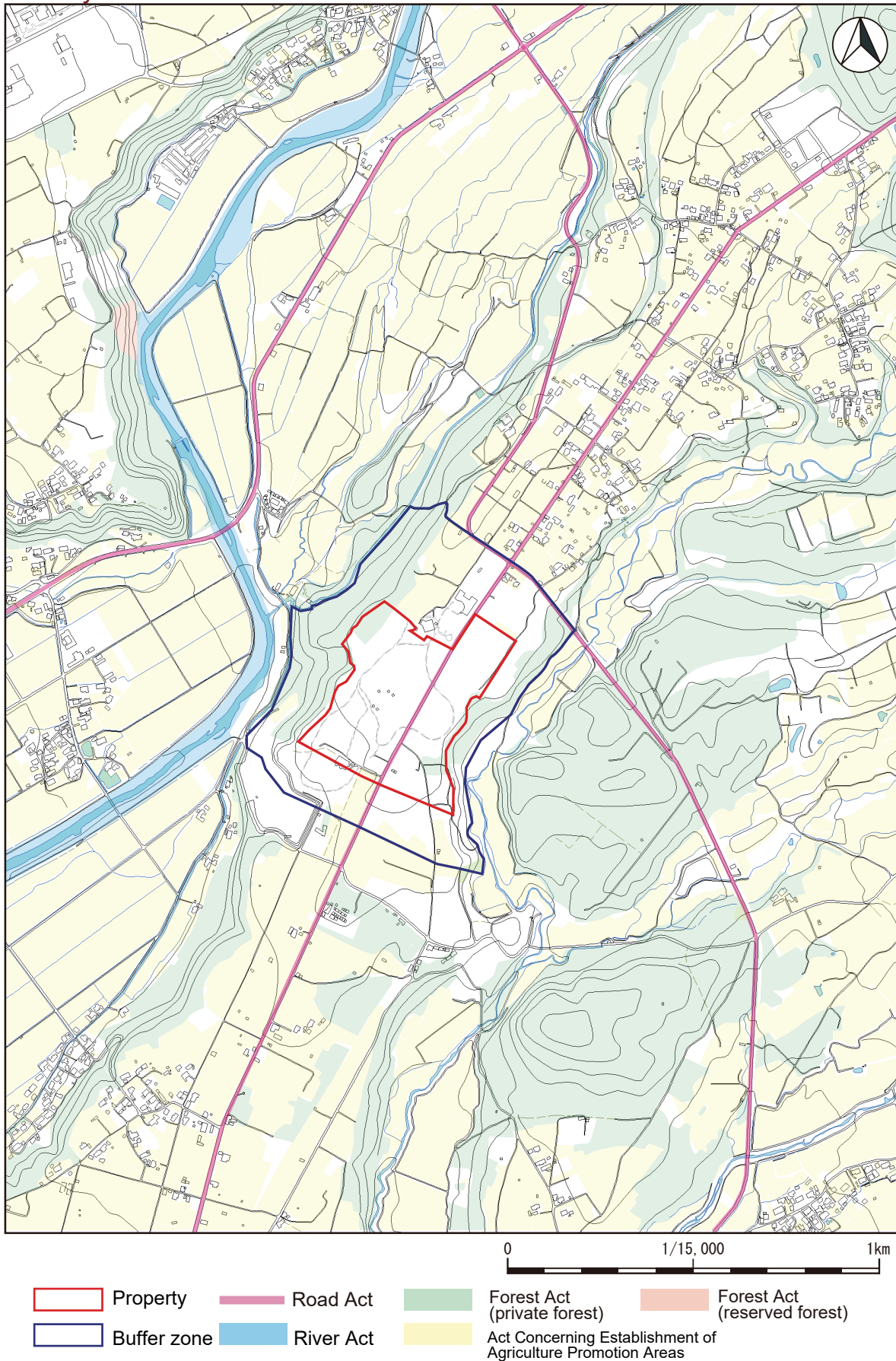


Figure 012-1 Map indicating the legal protection of the buffer zone around the component part (related to laws for land use control)

013 Kiusu Earthwork Burial Circles

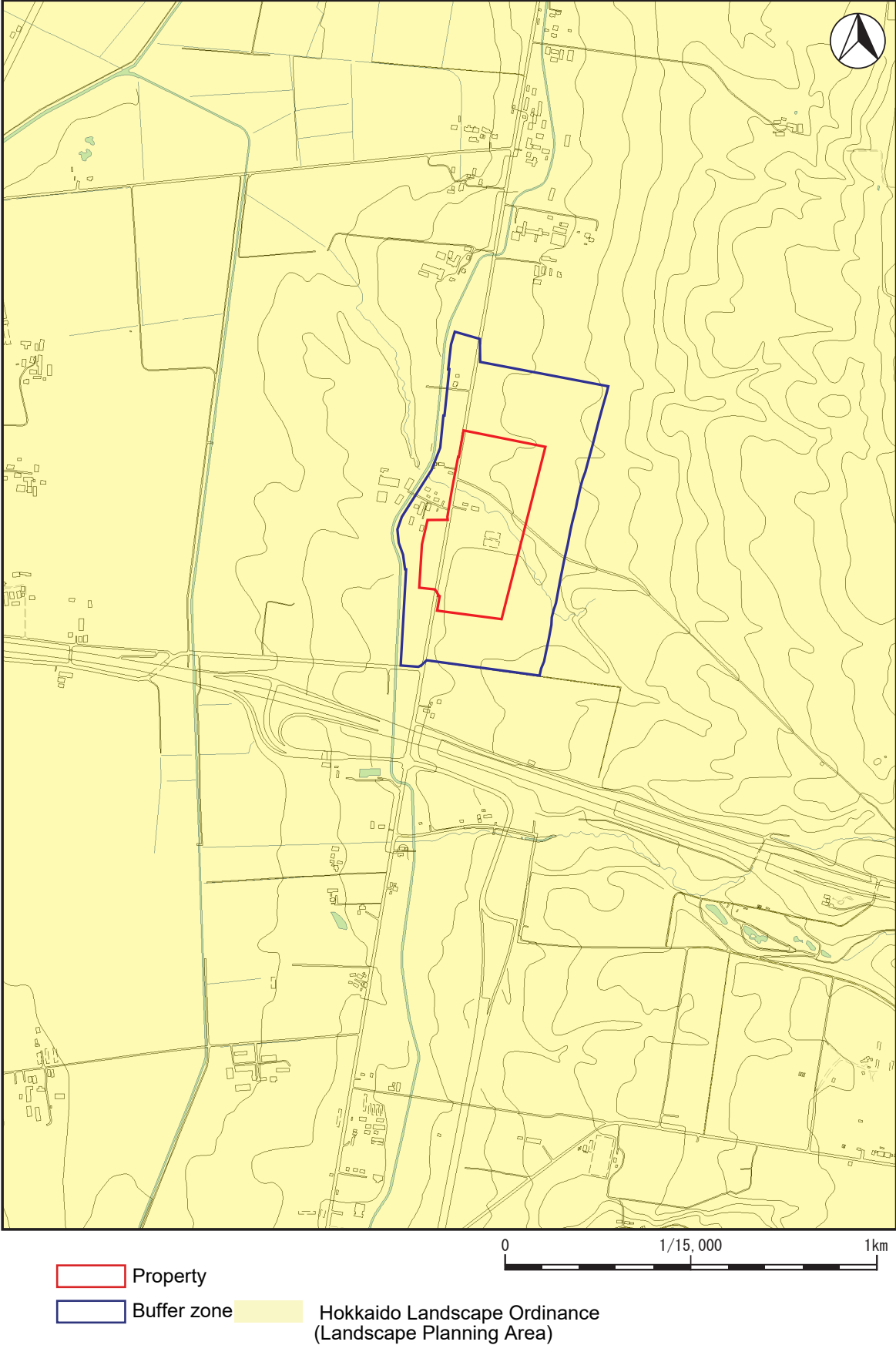


Figure 013-1 Map indicating the legal protection of the buffer zone around the component part (related to the Landscape Act)

# 013 Kiusu Earthwork Burial Circles

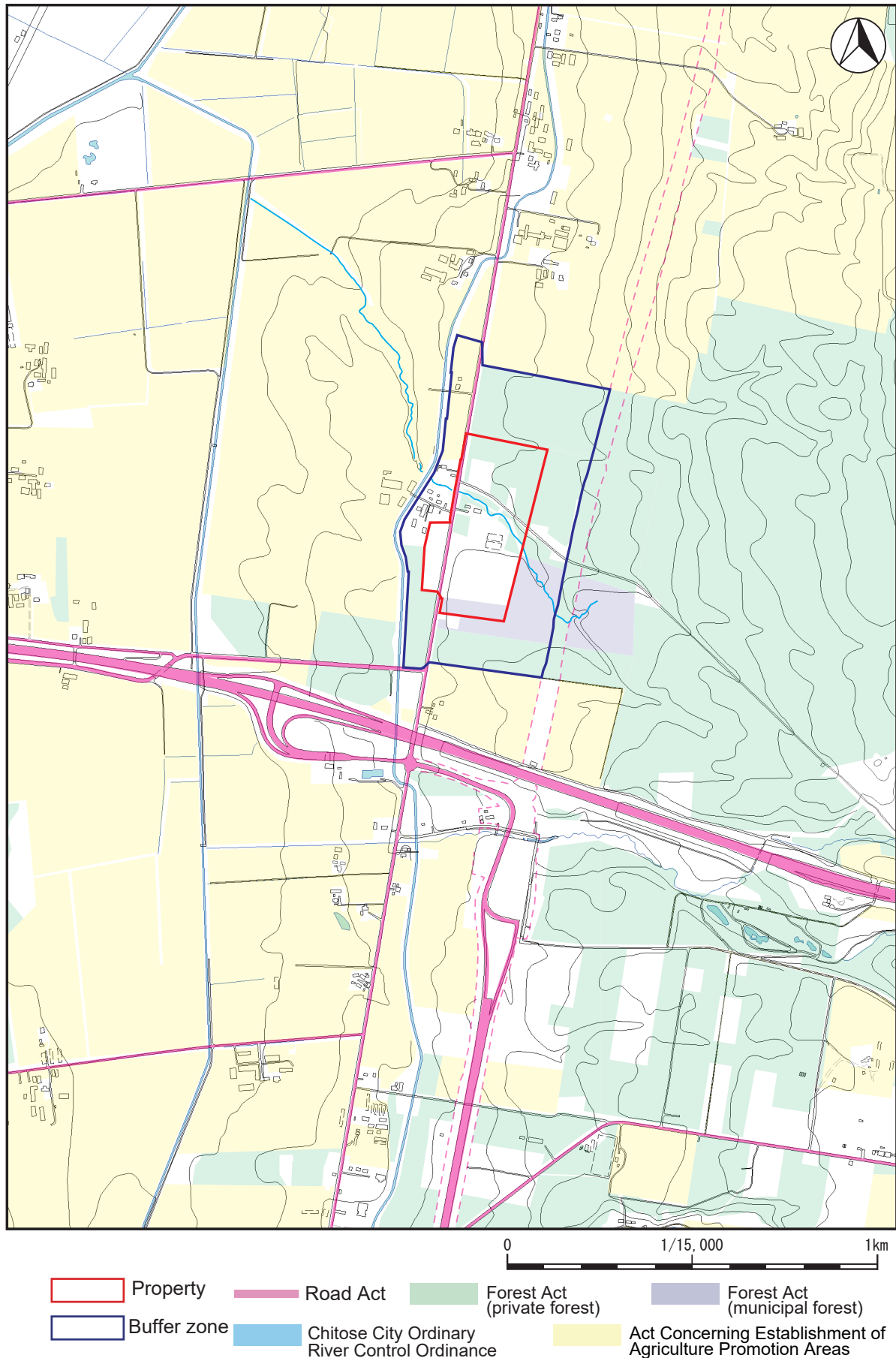


Figure 013-2 Map indicating the legal protection of the buffer zone around the component part (related to laws for land use control)



# 014 Omori Katsuyama Stone Circle

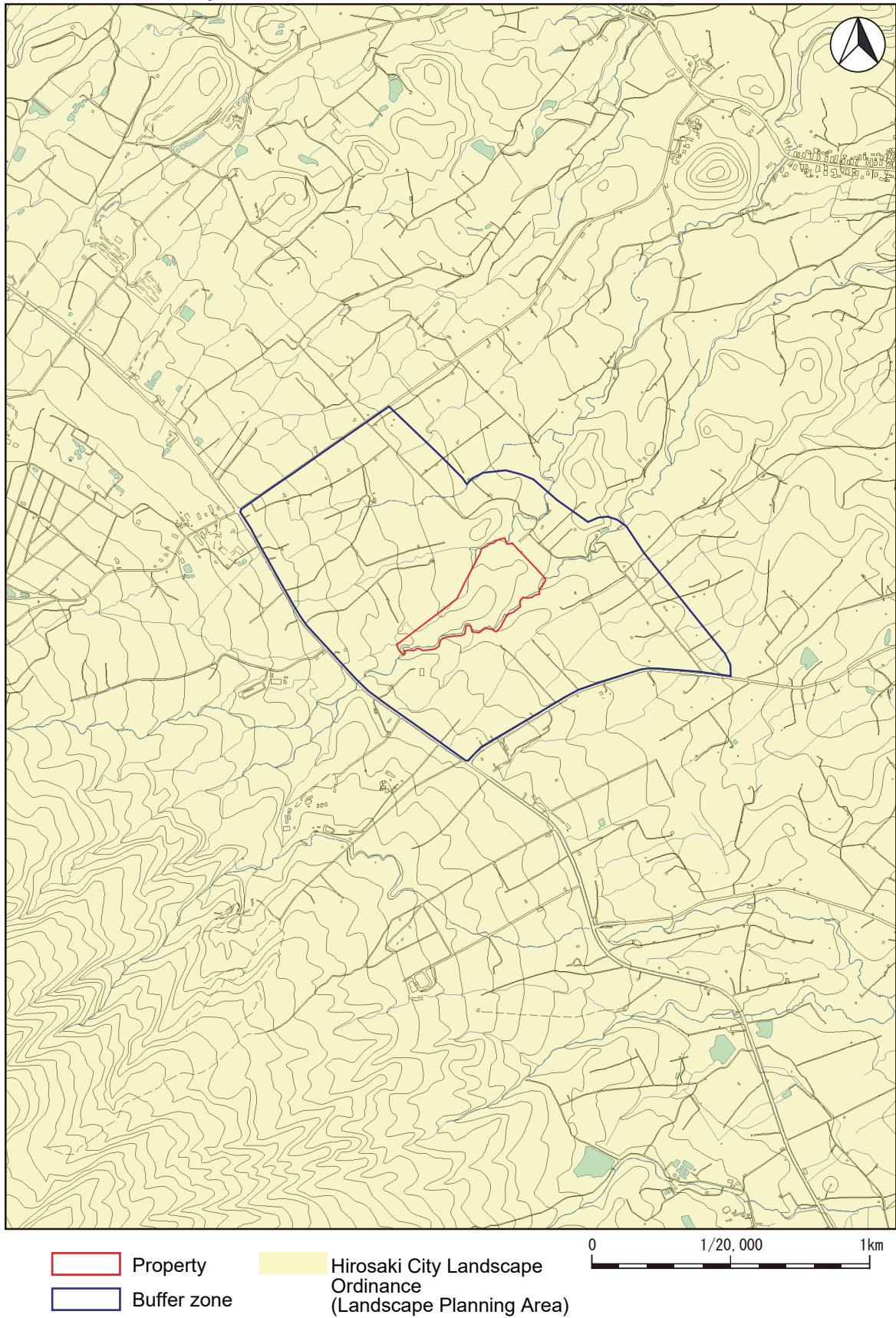


Figure 014-1 Map indicating the legal protection of the buffer zone around the component part (related to the Landscape Act)

# 014 Omori Katsuyama Stone Circle

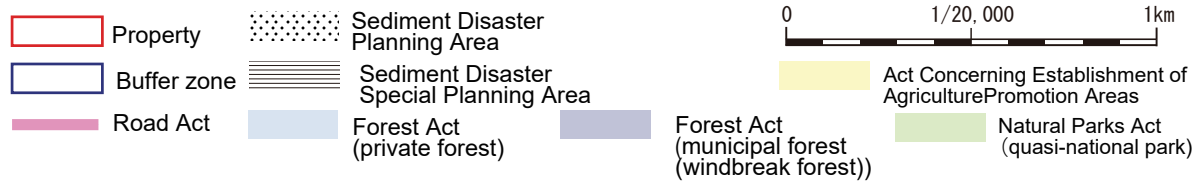
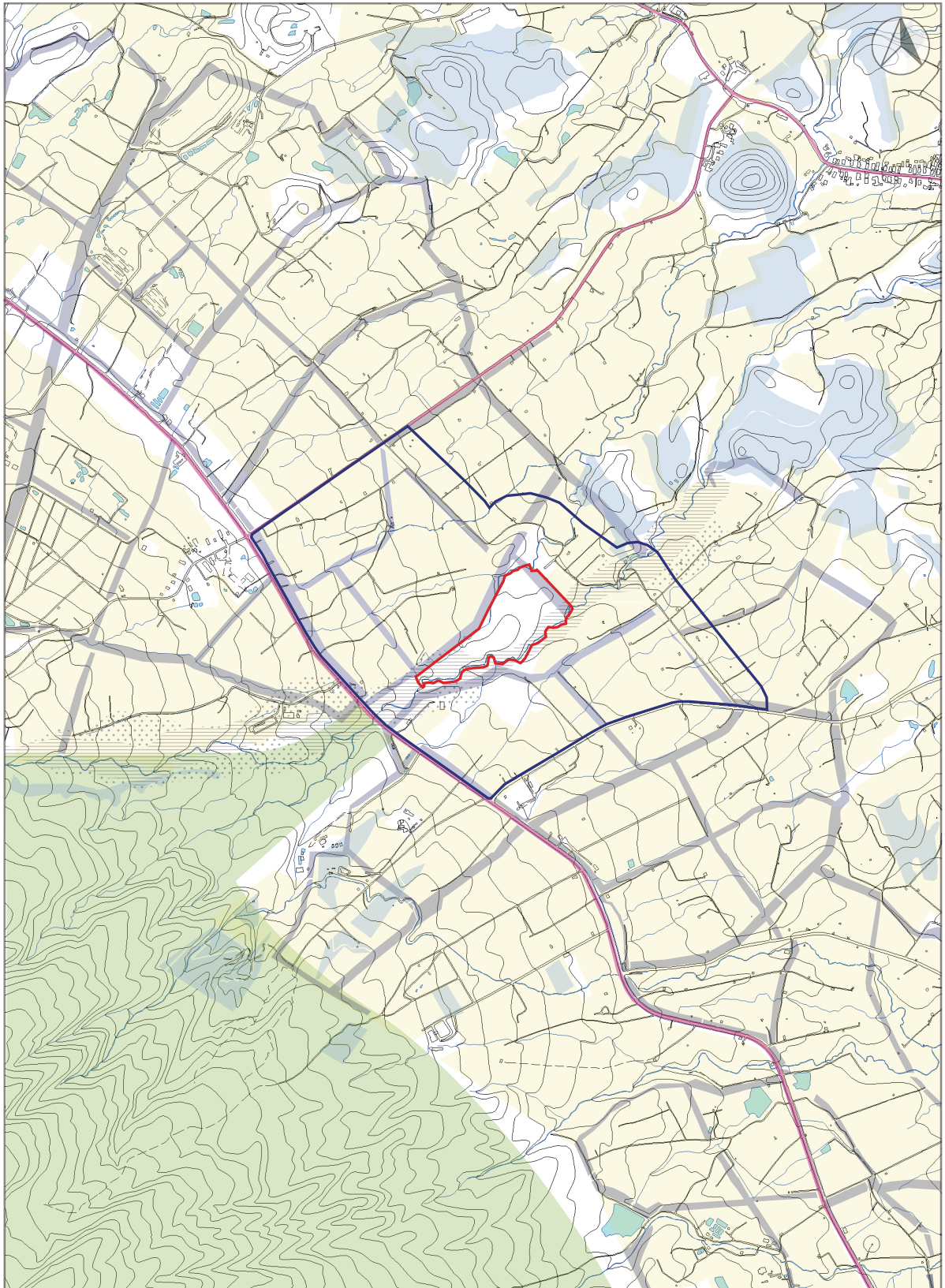


Figure 014-2 Map indicating the legal protection of the buffer zone around the component part (related to laws for land use control)

# 017 Korekawa Site

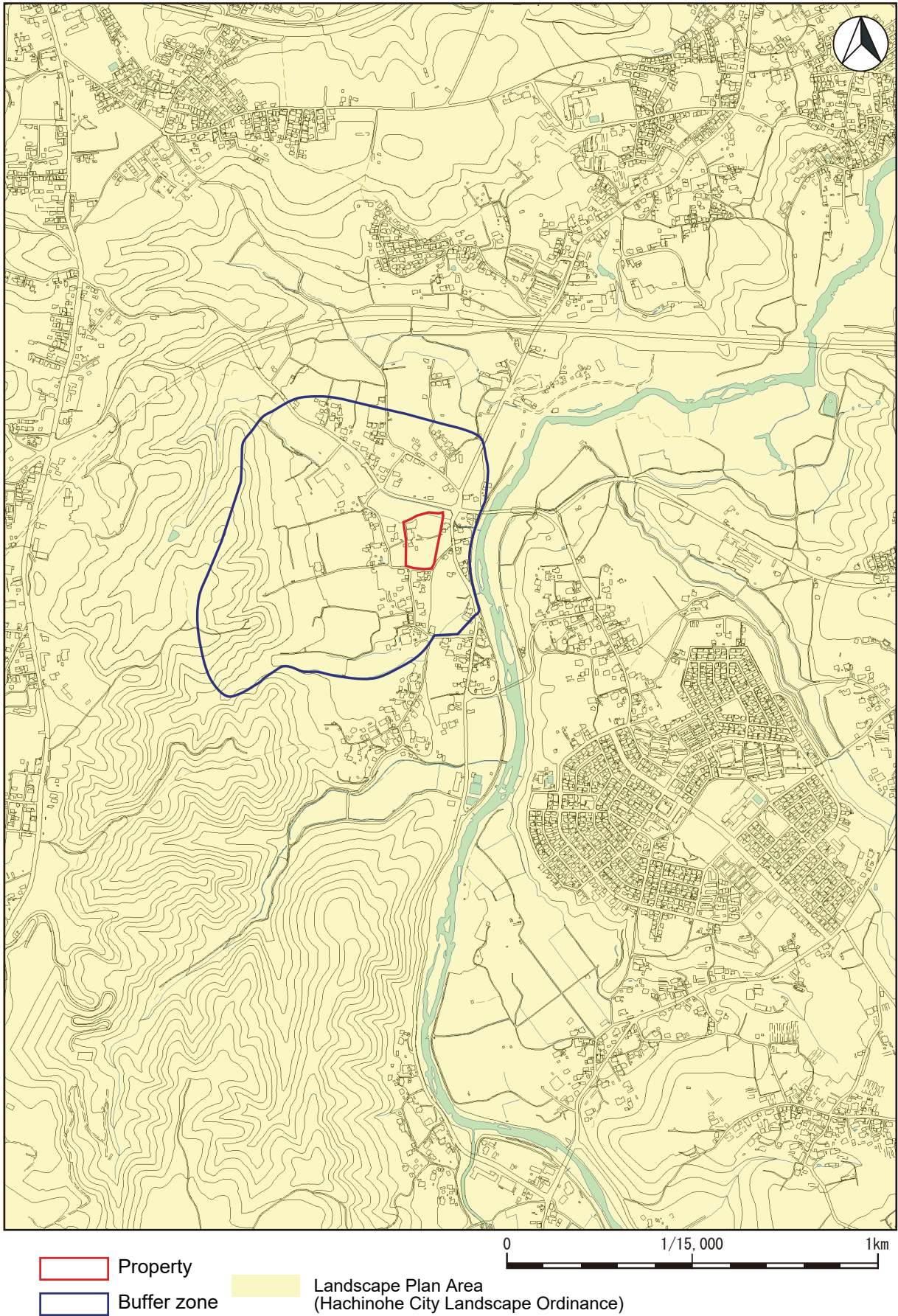
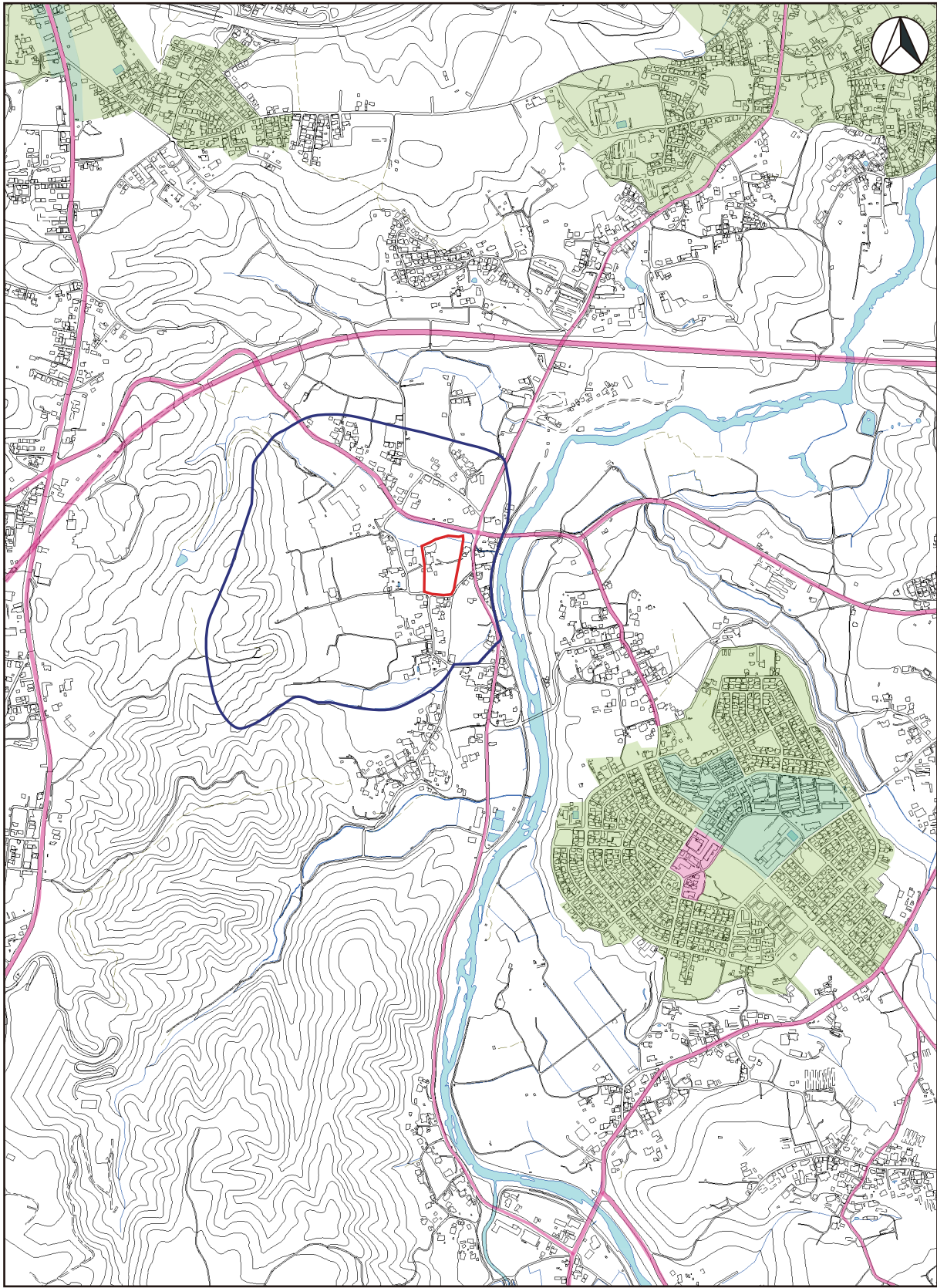


Figure 017-1 Map indicating the legal protection of the buffer zone around the component part (related to the Landscape Act)

# 017 Korekawa Site



0 1/15,000 1km








City Planning Act			
	Property	 Category I Exclusively Low-story Residential District	 Commercial District
	Buffer zone	 Category I Exclusively Medium-high Residential District	 River area  Road Act

Figure 17-2 Map indicating the legal protection of the buffer zone around the component part (related to laws for land use control)

# 017 Korekawa Site

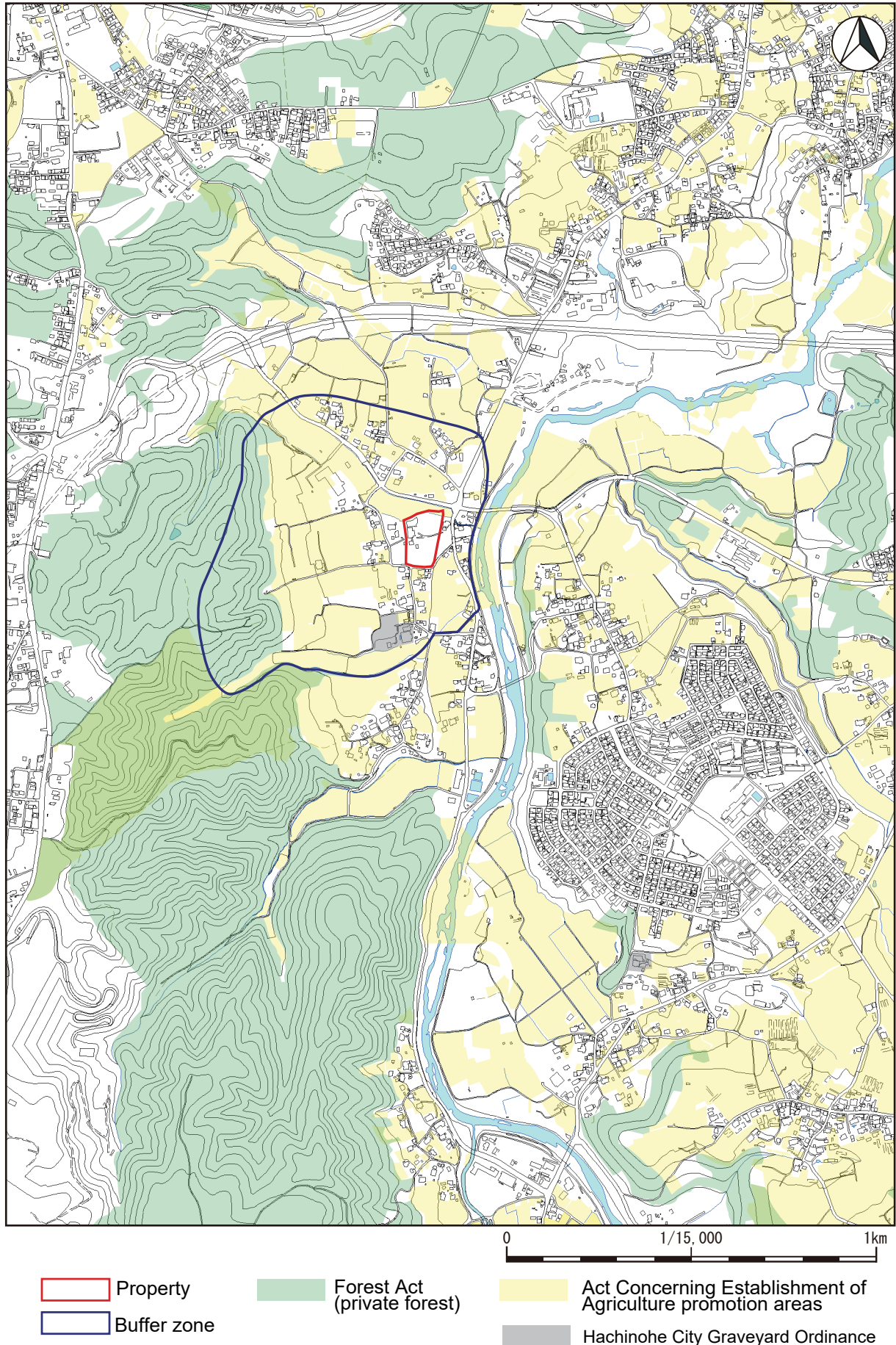


Figure 017-3 Map indicating the legal protection of the buffer zone around the component part (related to laws for land use control)

